





# Service Manual / Manuel de Service

## 3000 PSI Gasoline High Pressure Washer

### Laveuse à Haute Pression

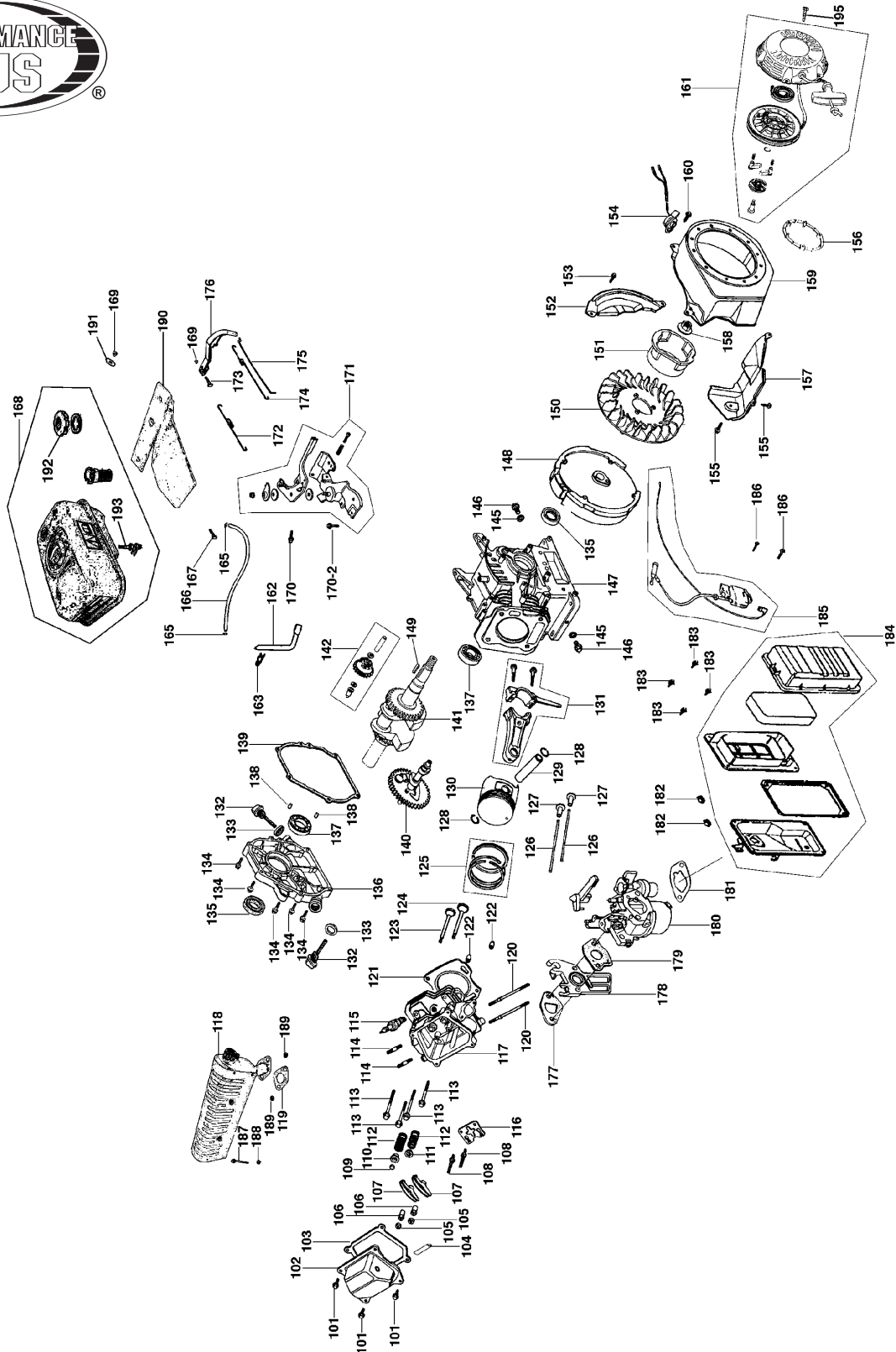
### 3000 LB/PO<sup>2</sup> à Essence



Revised/Revisé 09/2009

## Engine Diagram / Diagramme du Moteur

# KPW-3000FM





# Service Manual / Manuel de Service

## 3000 PSI Gasoline High Pressure Washer

### Laveuse à Haute Pression

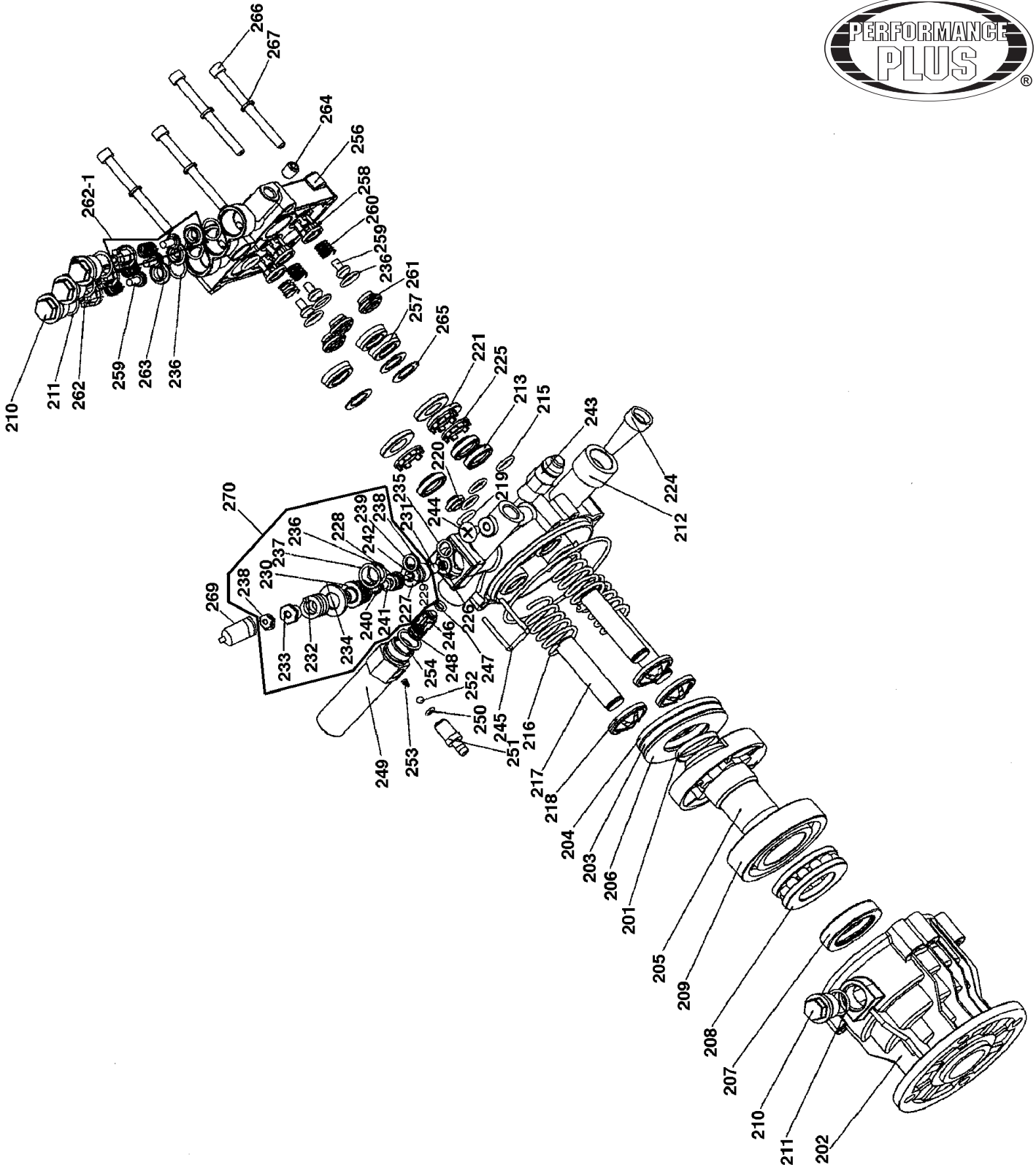
### 3000 LB/PO<sup>2</sup> à Essence



Revised/Revisé 09/2009

## Pump Diagram / Diagramme de la Pompe

# KPW-3000FM





# Parts Pricing List / Liste de Prix des Pièces **KPW-3000FM**

| Diag. | Order # Com. | English Description             | Description Française              | Qty./Qté. | Price/Prix |
|-------|--------------|---------------------------------|------------------------------------|-----------|------------|
| 1B    | 6330000012   | FRAME & UPPER HANDLE            | CHASSIS ET POIGNEE DU HAUT         | 1         | \$94.95    |
| 2A    | KM-085       | NOZZLE (0 DEGREES, RED)         | BUSE (0 DEGRES, ROUGE)             | 1         | -          |
| 2B    | KM-086       | NOZZLE (15 DEGREES, YELLOW)     | BUSE (15 DEGRES, JAUNE)            | 1         | -          |
| 2C    | KM-087       | NOZZLE (25 DEGREES, GREEN)      | BUSE (25 DEGRES, VERT)             | 1         | -          |
| 2D    | KM-088       | NOZZLE (40 DEGREES, WHITE)      | BUSE (40 DEGRES, BLANC)            | 1         | -          |
| 2E    | KM-089       | NOZZLE (DETERGENT, BLACK)       | BUSE (DETERGENT, NOIR)             | 1         | -          |
| 3     | 6330000030   | NOZZLE GROMMET                  | PORTE-BUSE                         | 5         | \$3.95     |
| 4     | 6330000040   | HEX. BOLT                       | BOULON HEXAGONAL                   | 4         | \$2.13     |
| 5     | 6330000050   | NYLON HEX. NUT                  | ECROU HEXAGONAL AVEC NYLON         | 4         | \$2.13     |
| 6     | 6330000060   | WASHER                          | RONDELLE                           | 8         | \$1.55     |
| 7     | KM-084       | HIGH PRESSURE HOSE (30')        | TUYAU HAUTE PRESSION (30 PI.)      | 1         | -          |
| 8     | 6330000080   | COMPLETE ENGINE ASSEMBLY        | MOTEUR COMPLET ASSEMBLE            | 1         | \$274.95   |
| 9     | 6330000090   | COMPLETE PUMP ASS'Y             | POMPE COMPLETE ASSEMBLEE           | 1         | \$199.95   |
| 10    | 6330000100   | THERMAL RELIEF VALVE CAP        | SOUPAPE DE SURETE THERMIQUE        | 1         | \$4.95     |
| 11    | 6330000110   | QUICK CONNECT COUP. (MALE/FEM.) | RACCORD A CONNEC. RAP. (MALE/FEM.) | 1         | \$11.95    |
| 13    | 6330000130   | 10" PNEUMATIC WHEEL ASS'Y       | ROUE PNEUMATIQUE 10" ASS.          | 2         | \$39.95    |
| 14    | 6330000140   | RUBBER PLUG                     | CAPUCHON EN CAOUTCHOUC             | 2         | \$4.45     |
| 15    | 6330000150   | CAP SCREW                       | BOULON A TETE CYLINDRIQUE          | 4         | \$2.59     |
| 16    | 6330000160   | WASHER                          | RONDELLE                           | 8         | \$1.55     |
| 17    | 6330000170   | NYLON HEX. NUT                  | ECROU HEXAGONAL AVEC NYLON         | 4         | \$1.67     |
| 18    | 6330000180   | RUBBER ISOLATOR                 | AMORTISSEUR EN CAOUTCHOUC          | 1         | \$8.95     |
| 21    | 6330000210   | DETERGENT FILTER                | FILTRE A DETERGENT                 | 1         | \$3.95     |
| 22    | 6330000220   | DETERGENT HOSE                  | BOYAU A DETERGENT                  | 1         | \$4.25     |
| 24    | 6330000240   | HEX. BOLT                       | BOULON HEXAGONAL                   | 2         | \$1.50     |
| 25    | 6330000250   | NYLON HEX. NUT                  | ECROU HEXAGONAL AVEC NYLON         | 2         | \$2.13     |
| 26    | 6330000260   | WASHER                          | RONDELLE                           | 4         | \$1.55     |
| 27    | KM-082       | STAINLESS STEEL WAND ASS'Y      | LANCE EN ACIER INOXYDABLE ASS.     | 1         | -          |
| 28    | 6330000280   | WAND HOOK RUBBER SLEEVE         | CAPUCHON EN CAOUTCHOUC             | 2         | \$2.85     |
| 29    | 6330000290   | RUBBER FOOT                     | PIED EN CAOUTCHOUC                 | 2         | \$5.95     |
| 30    | 6330000300   | CAP SCREW                       | BOULON A TETE CYLINDRIQUE          | 2         | \$2.24     |
| 31    | 6330000310   | NYLON HEX. NUT                  | ECROU HEXAGONAL AVEC NYLON         | 2         | \$2.24     |
| 32    | 6330000320   | WASHER                          | ECROU HEXAGONAL AVEC NYLON         | 2         | \$1.55     |
| 33    | 6330000330   | RUBBER PLUG                     | CAPUCHON EN CAOUTCHOUC             | 2         | \$4.45     |
| 34    | 6330000340   | THERMAL RELIEF VALVE DRAIN TUBE | BOYAU D'ECOULEMENT/SOUPAPE         | 1         | \$3.95     |
| 37    | 6330000370   | GUN HOOK                        | CROCHET POUR FUSIL                 | 1         | \$4.95     |
| 38    | 6330000380   | HOSE HOOK                       | CROCHET POUR BOYAU                 | 1         | \$5.95     |
| 39    | 6330000390   | CAP SCREW                       | BOULON A TETE CYLINDRIQUE          | 4         | \$2.25     |
| 40    | 6330000400   | SPRING WASHER                   | RONDELLE A RESSORT                 | 4         | \$1.61     |
| 41    | 6330000410   | WASHER                          | RONDELLE                           | 4         | \$1.55     |
| 43    | 6330000430   | SCREWDRIVER                     | TOURNEVIS                          | 1         | \$7.99     |
| 44    | 6330000440   | SPARK PLUG TUBE WRENCH (2 PTS)  | CLE TUBULAIRE/BOUGIE D'ALLUMAGE    | 1         | \$7.99     |
| 101   | 6330001010   | FLANGE HD BOLT                  | BOULON HEXAGONAL A TETE BRIDEE     | 4         | \$2.01     |
| 102   | 6330001020   | HEAD COVER                      | COUVERCLE DE LA TETE               | 1         | \$28.58    |
| 103   | 6330001030   | HEAD COVER GASKET               | JOINT D'ETANCHEITE DU COUV.        | 1         | \$12.59    |
| 104   | 6330001040   | BREATHER TUBE                   | TUBE DE RENIFLARD                  | 1         | \$4.54     |
| 105   | 6330001050   | LOCK NUT                        | ECROU DE VERROUILLAGE              | 2         | \$2.01     |
| 106   | 6330001060   | PIVOT NUT                       | ECROU DE PIVOT                     | 2         | \$2.82     |

Pricing subject to change without prior notice. / Prix sujet à changement sans préavis.



## Parts Pricing List / Liste de Prix des Pièces **KPW-3000FM**

| Diag. | Order # Com. | English Description           | Description Française              | Qty./Qté. | Price/Prix |
|-------|--------------|-------------------------------|------------------------------------|-----------|------------|
| 107   | 6330001070   | VALVE ROCKER                  | CULBUTEUR DE VALVE                 | 2         | \$7.99     |
| 108   | 6330001080   | PIVOT BOLT                    | BOULON DE PIVOTEMENT               | 2         | \$2.01     |
| 109   | 6330001090   | VALVE ROTATOR                 | PIVOT DE LA SOUPAPE                | 1         | \$5.69     |
| 110   | 6330001100   | EXHAUST VALVE SPRING RETAINER | RETENU DU RES./SOUPAPE D'ECHAP.    | 1         | \$5.58     |
| 111   | 6330001110   | INTAKE VALVE SPRING RETAINER  | RETENU DU RESSORT/SOUPAPE D'ADM.   | 1         | \$5.58     |
| 112   | 6330001120   | VALVE SPRING                  | RESSORT DE SOUPAPE                 | 2         | \$7.99     |
| 113   | 6330001130   | FLANGE HD HEX. BOLT           | BOULON HEXAGONAL A TETE BRIDEE     | 4         | \$2.47     |
| 114   | 6330001140   | EXHAUST PIPE THREADED STUD    | TIGE FILETEE DU TUYAU D'ECHAP.     | 2         | \$1.78     |
| 115   | 6330001150   | SPARK PLUG                    | BOUGIE D'ALLUMAGE                  | 1         | \$10.29    |
| 116   | 6330001160   | PUSH ROD GUIDE PLATE          | PLAQUE-GUIDE DES TIGES DE POU.     | 1         | \$10.29    |
| 117   | 6330001170   | CYLINDER HEAD                 | TETE DU CYLINDRE                   | 1         | \$114.95   |
| 118   | 6330001180   | COMPLETE MUFFLER              | SILENCIEUX COMPLET                 | 1         | \$47.95    |
| 119   | 6330001190   | MUFFLER GASKET                | JOINT D'ETANCHEITE DU SILENCIEUX   | 1         | \$4.95     |
| 120   | 6330001200   | CARBURATOR THREADED STUD      | TIGE FILETE DU CARBURATEUR         | 2         | \$2.01     |
| 121   | 6330001210   | CYLINDER HEAD GASKET          | JOINT D'ETANCHEITE DE LA TETE/CYL. | 1         | \$13.74    |
| 122   | 6330001220   | SLEEVE                        | MANCHON                            | 2         | \$1.90     |
| 123   | 6330001230   | EXHAUST VALVE                 | SOUPAPE D'ECHAPPEMENT              | 1         | \$20.64    |
| 124   | 6330001240   | INTAKE VALVE                  | SOUPAPE D'ADMISSION                | 1         | \$20.64    |
| 125   | 6330001250   | PISTON RING SET               | ENSEMBLE D'ANNEAUX DU PISTON       | 1         | \$22.94    |
| 126   | 6330001260   | PUSH ROD                      | TIGE DE POUSSEE                    | 2         | \$6.84     |
| 127   | 6330001270   | TAPPET                        | POUSSOIR                           | 2         | \$9.03     |
| 128   | 6330001280   | PISTON PIN CLIP               | COLLIER DE LA GOUPILLE DU PISTON   | 2         | \$1.78     |
| 129   | 6330001290   | PISTON PIN                    | GOUPILLE DU PISTON                 | 1         | \$9.03     |
| 130   | 6330001300   | PISTON                        | PISTON                             | 1         | \$27.43    |
| 131   | 6330001310   | COMPLETE CONNECTING ROD       | BIELLE COMPLETE                    | 1         | \$45.94    |
| 132   | 6330001320   | OIL FILLER CAP                | BOUCHON DE REMPLISSAGE D'HUILE     | 2         | \$5.69     |
| 133   | 6330001330   | OIL FILLER CAP GASKET         | JOINT DU BOUCHON DE REMPLISSAGE    | 2         | \$1.67     |
| 134   | 6330001340   | FLANGE HD HEX. BOLT           | BOULON HEXAGONAL A TETE BRIDEE     | 7         | \$2.25     |
| 135   | 6330001350   | OIL SEAL                      | JOINT D'ETANCHEITE D'HUILE         | 2         | \$13.74    |
| 136   | 6330001360   | CRANKCASE COVER               | COUVERCLE DU CARTER                | 1         | \$63.19    |
| 137   | 6330001370   | BALL BEARING                  | ROULEMENT A BILLES                 | 2         | \$19.49    |
| 138   | 6330001380   | SLEEVE                        | MANCHON                            | 2         | \$1.90     |
| 139   | 6330001390   | CRANKCASE COVER GASKET        | JOINT D'ETANCHEITE DU COUVERCLE    | 1         | \$16.96    |
| 140   | 6330001400   | CAMSHAFT                      | ARBRE A CAME                       | 1         | \$114.94   |
| 141   | 6330001410   | CRANKSHAFT                    | VILEBREQUIN                        | 1         | \$109.19   |
| 142   | 6330001420   | COMPLETE GOVERNOR GEAR        | ENGRENAGE DU REGULATEUR COMP.      | 1         | \$17.19    |
| 145   | 6330001450   | DRAIN PLUG WASHER             | RONDELLE DU BOUCHON A VIDANGE      | 2         | \$1.67     |
| 146   | 6330001460   | DRAIN PLUG                    | BOUCHON A VIDANGE                  | 2         | \$3.16     |
| 147   | 6330001470   | CRANK CASE                    | CARTER                             | 1         | \$201.25   |
| 148   | 6330001480   | FLYWHEEL                      | VOLANT                             | 1         | \$51.58    |
| 149   | 6330001490   | WOODRUFF KEY                  | CLE "WOODRUFF"                     | 1         | \$2.82     |
| 150   | 6330001500   | COOLING FAN                   | VENTILATEUR                        | 1         | \$17.19    |
| 151   | 6330001510   | STARTER PULLEY                | POULIE DE DEMARRAGE                | 1         | \$10.29    |
| 152   | 6330001520   | FLYWHEEL SIDE PLATE           | PLAQUE DE COTE DU VOLANT           | 1         | \$13.74    |
| 153   | 6330001530   | FLANGE HD HEX. BOLT           | BOULON HEXAGONAL A TETE BRIDEE     | 1         | \$2.07     |
| 154   | 6330001540   | ENGINE SWITCH                 | INTERRUPTEUR DU MOTEUR             | 1         | \$9.14     |
| 155   | 6330001550   | FLANGE HD HEX. BOLT           | BOULON HEXAGONAL A TETE BRIDEE     | 2         | \$2.01     |

Pricing subject to change without prior notice. / Prix sujet à changement sans préavis.



## Parts Pricing List / Liste de Prix des Pièces **KPW-3000FM**

| Diag. | Order # Com. | English Description      | Description Française              | Qty./Qté. | Price/Prix |
|-------|--------------|--------------------------|------------------------------------|-----------|------------|
| 156   | 6330001560   | RECOIL STARTER SPACER    | ESPACEUR DU SYSTEME DE DEMAR.      | 1         | \$7.95     |
| 157   | 6330001570   | HEAT SHROUD              | PARE CHALEUR                       | 1         | \$11.44    |
| 158   | 6330001580   | FLYWHEEL NUT             | ECROU DU VOLANT                    | 1         | \$4.54     |
| 159   | 6330001590   | FAN COVER                | COUVERCLE DU VENTILATEUR           | 1         | \$28.69    |
| 160   | 6330001600   | FLANGE HD HEX. BOLT      | BOULON HEXAGONAL A TETE BRIDEE     | 4         | \$2.07     |
| 161   | 6330001610   | COMPLETE RECOIL STARTER  | SYSTEME DE DEMARRAGE COMP.         | 1         | \$86.19    |
| 162   | 6330001620   | GOVERNOR ARM             | BRAS DU REGULATEUR                 | 1         | \$5.46     |
| 163   | 6330001630   | LOCK PIN                 | GOUPILLE DE VERROUILLAGE           | 1         | \$1.67     |
| 165   | 6330001650   | TUBE CLIP                | ATTACHE DU BOYAU                   | 2         | \$1.67     |
| 166   | 6330001660   | FUEL TUBE                | BOYAU A ESSENCE                    | 1         | \$10.29    |
| 167   | 6330001670   | FLANGE HD HEX. BOLT      | BOULON HEXAGONAL A TETE BRIDEE     | 1         | \$2.01     |
| 168   | 6330001680   | COMPLETE FUEL TANK       | RESERVOIR A ESSENCE COMPLET        | 1         | \$39.95    |
| 169   | 6330001690   | FLANGE HD HEX. NUT       | ECROU HEXAGONAL A TETE BRIDEE      | 4         | \$1.21     |
| 170   | 6330001700   | FLANGE HD HEX. BOLT      | BOULON HEXAGONAL A TETE BRIDEE     | 1         | \$2.01     |
| 170-2 | 6330001702   | FLANGE HD HEX. BOLT      | BOULON HEXAGONAL A TETE BRIDEE     | 1         | \$2.01     |
| 171   | 6330001710   | COMPLETE SPEED CONTROL   | CONTROLEUR DE VITESSE COMP.        | 1         | \$11.44    |
| 172   | 6330001720   | GOVERNOR SPRING          | RESSORT DU REGULATEUR              | 1         | \$3.74     |
| 173   | 6330001730   | QUADRATE BOLT            | BOULON A TETE CARREE               | 1         | \$3.74     |
| 174   | 6330001740   | THROTTLE RETURN SPRING   | RESSORT DE RETOUR DE PUISSANCE     | 1         | \$3.28     |
| 175   | 6330001750   | GOVERNOR ROD             | TIGE DU REGULATEUR DE VITESSE      | 1         | \$3.39     |
| 176   | 6330001760   | REGULATING ARM           | BRAS DE REGULATION                 | 1         | \$6.84     |
| 177   | 6330001770   | AIR INTAKE GASKET        | JOINT D'ETANCHEITE DE L'ADM. D'AIR | 1         | \$10.29    |
| 178   | 6330001780   | CONNECTING BLOCK         | BLOC DE CONNECTION                 | 1         | \$11.44    |
| 179   | 6330001790   | CARBURETOR GASKET        | JOINT D'ETANCHEITE DU CARBURATEUR  | 1         | \$10.29    |
| 180   | 6330001800   | CARBURETOR               | CARBURATEUR                        | 1         | \$80.44    |
| 181   | 6330001810   | AIR FILTER GASKET        | JOINT D'ETANCHEITE DU FILTRE A AIR | 1         | \$10.29    |
| 182   | 6330001820   | FLANGE HD HEX. NUT       | ECROU HEXAGONAL A TETE BRIDEE      | 2         | \$1.21     |
| 183   | 6330001830   | FLANGE HD HEX. BOLT      | BOULON HEXAGONAL A TETE BRIDEE     | 4         | \$2.70     |
| 184   | 6330001840   | AIR FILTER               | FILTRE A AIR                       | 1         | \$49.95    |
| 185   | 6330001850   | IGNITION COIL            | ENROULEMENT D'ALLUMAGE             | 1         | \$52.73    |
| 186   | 6330001860   | FLANGE HD HEX. BOLT      | BOULON HEXAGONAL A TETE BRIDEE     | 2         | \$2.01     |
| 187   | 6330001870   | FLANGE HD HEX. BOLT      | BOULON HEXAGONAL A TETE BRIDEE     | 1         | \$2.15     |
| 188   | 6330001880   | FLANGE HD HEX. NUT       | ECROU HEXAGONAL A TETE BRIDEE      | 1         | \$1.21     |
| 189   | 6330001890   | FLANGE HD HEX. NUT       | ECROU HEXAGONAL A TETE BRIDEE      | 2         | \$1.78     |
| 190   | 6330001900   | FUEL TANK BRACKET        | SUPPORT DU RESERVOIR A ESSENCE     | 1         | \$8.95     |
| 191   | 6330001910   | FUEL TANK RUBBER BUSHING | COUSSINET DE CAOUTCHOUC/RESERV.    | 2         | \$2.95     |
| 192   | 6330001920   | FUEL CAP                 | BOUCHON DU RESERVOIR A ESSENCE     | 1         | \$11.44    |
| 193   | 6330001930   | FUEL VALVE               | SOUPAPE D'ESSENCE                  | 1         | \$11.95    |
| 195   | 6330001950   | FLANGE HD HEX. BOLT      | BOULON HEXAGONAL A TETE BRIDEE     | 3         | \$2.65     |
| 196   | 6330001960   | FUEL LEVEL INDICATOR     | INDICATEUR DU NIVEAU D'ESSENCE     | 1         | \$14.95    |
| 201   | 6330002010   | STEEL RING               | BAGUE D'ACIER                      | 1         | \$12.95    |
| 202   | 6330002020   | PUMP BODY                | CORPS DE LA POMPE                  | 1         | \$34.95    |
| 203   | 6330002030   | BEARING CAGE             | CAGE DU ROULEMENT                  | 1         | \$14.95    |
| 204   | 6330002040   | BEARING PLATE            | PLAQUE DU ROULEMENT                | 1         | \$5.95     |
| 205   | 6330002050   | CAM                      | CAME                               | 1         | \$24.95    |
| 206   | 6330002060   | BEARING PLATE            | PLAQUE DU ROULEMENT                | 1         | \$5.95     |
| 207   | 6330002070   | OIL SEAL                 | JOINT D'ETANCHEITE D'HUILE         | 1         | \$9.95     |

Pricing subject to change without prior notice. / Prix sujet à changement sans préavis.



## Parts Pricing List / Liste de Prix des Pièces **KPW-3000FM**

| Diag. | Order # Com. | English Description          | Description Française            | Qty./Qté. | Price/Prix |
|-------|--------------|------------------------------|----------------------------------|-----------|------------|
| 208   | 6330002080   | THRUST BEARING               | ROULEMENT A BUTEE                | 1         | \$37.95    |
| 209   | 6330002090   | BALL BEARING                 | ROULEMENT A BILLES               | 1         | \$52.84    |
| 210   | 6330002100   | THREADED CAP                 | BOUCHON FILETE                   | 4         | \$5.95     |
| 211   | 6330002110   | O-RING                       | JOINT TORIQUE                    | 4         | \$1.75     |
| 212   | 6330002120   | PUMP SEAT                    | SIEGE DE LA POMPE                | 1         | \$29.95    |
| 213   | 6330002130   | OIL SEAL                     | JOINT D'ETANCHEITE D'HUILE       | 3         | \$4.95     |
| 215   | 6330002150   | O-RING                       | JOINT TORIQUE                    | 3         | \$1.65     |
| 216   | 6330002160   | PISTON SPRING                | RESSORT DU PISTON                | 3         | \$4.95     |
| 217   | 6330002170   | PISTON                       | PISTON                           | 3         | \$6.95     |
| 218   | 6330002180   | SPRING RETAINER              | RETENEUR DU RESSORT              | 3         | \$2.25     |
| 219   | 6330002190   | O-RING                       | JOINT TORIQUE                    | 2         | \$1.45     |
| 220   | 6330002200   | COPPER GASKET                | JOINT EN CUIVRE                  | 1         | \$5.95     |
| 221   | 6330002210   | BRASS COVER                  | COUVERCLE EN LAITON              | 3         | \$7.95     |
| 224   | 6330002240   | FILTER                       | FILTRE                           | 1         | \$4.95     |
| 225   | 6330002250   | PLASTIC RING                 | BAGUE EN PLASTIQUE               | 3         | \$3.75     |
| 226   | 6330002260   | VALVE SEAT                   | SIEGE POUR SOUPE                 | 1         | \$2.95     |
| 227   | 6330002270   | VALVE SLEEVE                 | MANCHON POUR SOUPE               | 1         | \$5.95     |
| 228   | 6330002280   | VALVE ROD                    | TIGE DE LA SOUPE                 | 1         | \$7.95     |
| 229   | 6330002290   | VALVE TOP PIN                | GOUPILLE DU HAUT DE LA SOUPE     | 1         | \$8.95     |
| 230   | 6330002300   | VALVE                        | SOUPE                            | 1         | \$8.95     |
| 231   | 6330002310   | STEEL BALL                   | BILLE D'ACIER                    | 1         | \$1.25     |
| 232   | 6330002320   | PRESSURE ADJUSTING SPRING    | RESSORT D'AJUSTEMENT DE PRESSION | 1         | \$4.75     |
| 233   | 6330002330   | PRESSURE ADJUSTING NUT       | ECROU D'AJUSTEMENT DE PRESSION   | 1         | \$2.75     |
| 234   | 6330002340   | PRESSURE ADJUSTING WASHER    | RONDELLE D'AJUSTEMENT/PRESSION   | 1         | \$2.25     |
| 235   | 6330002350   | O-RING                       | JOINT TORIQUE                    | 1         | \$1.55     |
| 236   | 6330002360   | O-RING                       | JOINT TORIQUE                    | 7         | \$1.45     |
| 237   | 6330002370   | O-RING                       | JOINT TORIQUE                    | 1         | \$1.45     |
| 238   | 6330002380   | O-RING                       | JOINT TORIQUE                    | 1         | \$1.55     |
| 239   | 6330002390   | O-RING                       | JOINT TORIQUE                    | 1         | \$1.65     |
| 240   | 6330002400   | O-RING                       | JOINT TORIQUE                    | 1         | \$2.95     |
| 241   | 6330002410   | O-RING                       | JOINT TORIQUE                    | 1         | \$1.45     |
| 242   | 6330002420   | VALVE ROD SPRING             | RESSORT DE LA TIGE DE SOUPE      | 1         | \$1.95     |
| 243   | 6330002430   | THERMAL RELIEF VALVE         | SOUPE DE RELACHE THERMIQUE       | 1         | \$11.95    |
| 244   | 6330002440   | SPECIAL COUNTERSUNK HD SCREW | VIS A TETE FRAISEE SPECIALE      | 1         | \$2.15     |
| 245   | 6330002450   | LOCK PIN                     | GOUPILLE DE VERROUILLAGE         | 1         | \$2.75     |
| 246   | 6330002460   | VALVE ROD                    | TIGE DE LA SOUPE                 | 1         | \$3.45     |
| 247   | 6330002470   | O-RING                       | JOINT TORIQUE                    | 1         | \$1.25     |
| 248   | 6330002480   | VALVE SPRING                 | RESSORT DE LA SOUPE              | 1         | \$2.95     |
| 249   | 6330002490   | "T" CONNECTOR                | RACCORD EN "T"                   | 1         | \$5.95     |
| 250   | 6330002500   | O-RING                       | JOINT TORIQUE                    | 1         | \$2.85     |
| 251   | 6330002510   | SOAP CONNECTOR               | RACCORD POUR SAVON               | 1         | \$4.95     |
| 252   | 6330002520   | STEEL BALL                   | BILLE D'ACIER                    | 1         | \$2.01     |
| 253   | 6330002530   | CONE SPRING                  | RESSORT EN CONE                  | 1         | \$2.95     |
| 254   | 6330002540   | O-RING                       | JOINT TORIQUE                    | 1         | \$1.75     |
| 256   | 6330002560   | PUMP COVER                   | COUVERCLE DE LA POMPE            | 1         | \$84.95    |
| 257   | 6330002570   | "Y" SEAL                     | JOINT D'ETANCHEITE EN "Y"        | 3         | \$2.75     |
| 258   | 6330002580   | INLET CHECK VALVE            | SOUPE DE RETENUE POUR ENTREE     | 3         | \$2.25     |

Pricing subject to change without prior notice. / Prix sujet à changement sans préavis.



## Parts Pricing List / Liste de Prix des Pièces **KPW-3000FM**

| Diag. | Order # Com. | English Description         | Description Française          | Qty./Qté. | Price/Prix |
|-------|--------------|-----------------------------|--------------------------------|-----------|------------|
| 259   | 6330002590   | CHECK VALVE BALL            | BILLE POUR SOUPE DE RETENUE    | 6         | \$1.75     |
| 260   | 6330002600   | CHECK VALVE SPRING          | RESSORT POUR SOUPE DE RET.     | 6         | \$1.95     |
| 261   | 6330002610   | BRASS CHECK VALVE CAP       | CAPUCHON DE VALVE DE RETENUE   | 3         | \$6.95     |
| 262   | 6330002620   | CHECK VALVE SUPPORT         | SUPPORT POUR SOUPE DE RET.     | 3         | \$2.25     |
| 262-1 | 6330002621   | CHECK VALVE ASS'Y           | SOUPE DE RETENU ASSEMBLEE      | 3         | \$6.95     |
| 263   | 6330002630   | CHECK VALVE CAP             | CAPUCHON DE SOUPE DE RET.      | 3         | \$3.95     |
| 264   | 6330002640   | SET SCREW                   | VIS SANS TETE                  | 1         | \$1.95     |
| 265   | 6330002650   | PLASTIC SEAL                | JOINT EN PLASTIQUE             | 3         | \$2.85     |
| 266   | 6330002660   | CAP SCREW                   | BOULON A TETE CYLINDRIQUE      | 4         | \$2.95     |
| 267   | 6330002670   | SPRING WASHER               | RONDELLE A RESSORT             | 4         | \$1.55     |
| 69    | 6330002690   | TAMPER-PROOF COVER          | COUVERCLE SCELLE               | 1         | \$4.25     |
| 270   | 6330002700   | PRESSURE RELIEF VALVE ASS.  | SOUPE DE RELACHE/PRESSION ASS. | 3         | \$34.95    |
| 888-8 | 6330008888   | O-RING KIT                  | ENSEMBLE DE JOINTS TORIQUES    | 1         | \$24.95    |
|       | 633000MBIL   | KPW-3000FM BILINGUAL MANUAL | KPW-3000FM MANUEL BILINGUE     | 1         | \$15.00    |