



KING CANADA

WET•DRY VACUUM WITH DETACHABLE BLOWER



Wet•Dry•Blower•Vac

MODEL: 8531LP-B

INSTRUCTION MANUAL

COPYRIGHT © 2009 ALL RIGHTS RESERVED BY KING CANADA TOOLS INC.

WARRANTY INFORMATION & SAFETY RULES FOR WET•DRY VACUUMS



**2-YEAR
LIMITED WARRANTY
FOR THIS WET•DRY VACUUM**

**KING CANADA TOOLS
OFFERS A 2-YEAR LIMITED WARRANTY
FOR NON-COMMERCIAL USE.**

PROOF OF PURCHASE

Please keep your dated proof of purchase for warranty and servicing purposes.

REPLACEMENT PARTS

Replacement parts for this tool are available at our authorized KING CANADA service centers across Canada. For servicing, contact or return to the retailer where you purchased your product along with your proof of purchase.

LIMITED TOOL WARRANTY

KING CANADA makes every effort to ensure that this product meets high quality and durability standards. KING CANADA warrants to the original retail consumer a 2-year limited warranty as of the date the product was purchased at retail and that each product is free from defects in materials. Warranty does not apply to defects due directly or indirectly to misuse, abuse, negligence or accidents, repairs or alterations and lack of maintenance. KING CANADA shall in no event be liable for death, injuries to persons or property or for incidental, special or consequential damages arising from the use of our products. To take advantage of this warranty, the product or part must be returned for examination by the retailer. Shipping and handling charges may apply. If a defect is found, KING CANADA will either repair or replace the product.

ITEMS NOT COVERED UNDER WARRANTY

Accessories supplied with this vacuum such as the hose, 10" floor sweep, crevice tool, foam filter, re-usable filter, caster wheels and 2-1/2" blower accessories are not covered under warranty and are available as optional accessories at your nearest King Canada distributor.

IMPORTANT SAFETY RULES FOR THIS WET•DRY VACUUM

VOLTAGE WARNING: Before connecting this vacuum to a power source (receptacle, outlet, etc.) be sure the voltage supplied is the same as that specified on the nameplate. A power source with voltage greater than the specified voltage on nameplate can result in **SERIOUS INJURY** to the user - as well as damage to the motor. If in doubt **DO NOT PLUG IN THE VACUUM**. Using a power source with voltage less than the nameplate is also harmful to the motor.

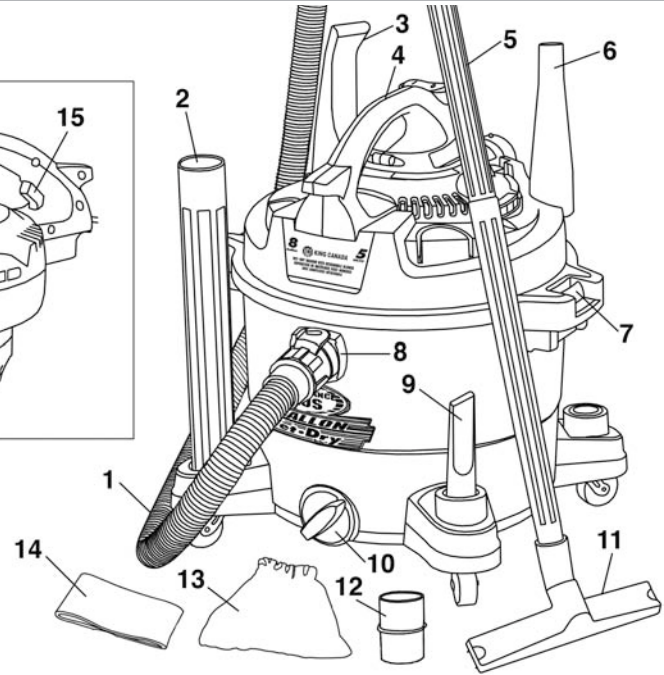
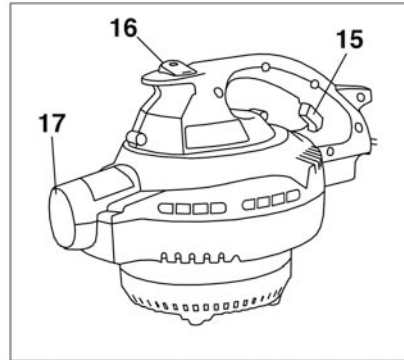
- 1. KNOW YOUR VACUUM.** Read and understand the owners manual and labels affixed to the vacuum. Learn its application and limitations as well as its specific potential hazards.
 - 2. WEAR PROPER APPAREL.** Do not wear loose clothing, gloves, neckties or jewelry (rings, watch) because suction force could get them caught in the vacuum. Wear protective hair covering to contain long hair. Roll up long sleeves above the elbows.
 - 3. Do NOT expose to rain, this vacuum must be stored indoors.**
 - 4. Do not handle the electrical plug or vacuum with wet hands.**
 - 5. Never use this vacuum with any opening blocked, keep opening free of dust, hair, lint or anything that will restrict air flow.**
 - 6. Never vacuum anything that is on fire, burning or smoking such as matches, cigarettes or hot ashes. Never vacuum flammable or combustible liquids such as gasoline, electrical devices could produce sparks which can cause a fire or explosion! Never vacuum toxic or hazardous materials.**
 - 7. Never use this vacuum without dust bag and/or filters installed.**
 - 8. Never vacuum coal ash, cement or drywall dust without a re-usable filter or dust bag in place or you could damage the motor or the material could be exhausted back into the air. When vacuuming drywall dust, a high efficiency drywall filter and dust bag must be used to prevent serious motor damage. These high efficiency accessories are available and are listed in this manual.**
 - 9. Do not use this vacuum with a torn filter or without a filter installed (except when vacuuming liquids).**
- When using detachable blower;
Always wear safety glasses, only direct the blower air discharge towards your work area, never towards a person.
Never use as a sprayer.



GETTING TO KNOW YOUR VACUUM, ELECTRICAL INFO & SPECIFICATIONS

GETTING TO KNOW YOUR VACUUM

- 1) 1-1/4" x 6ft. twist lock hose
- 2) 2-1/2" blower extension
- 3) 2-1/2" blower nozzle
- 4) Top carry handle/detachable blower
- 5) 2pc extension wands
- 6) 2-1/2" cone nozzle
- 7) Latch (1 of 2)
- 8) Twist lock inlet
- 9) 1-1/4" crevice tool
- 10) Tank drain cap
- 11) 1-1/4" x 10" floor sweep
- 12) 2-1/2" blower adaptor fitting
- 13) Re-usable filter
- 14) Foam filter
- 15) Blower release button
- 16) On/Off switch
- 17) 2-1/2" blower outlet



ELECTRICAL INFO & SPECIFICATIONS

POWER SUPPLY- WARNING: YOUR VACUUM MUST BE CONNECTED TO A 110V, MINIMUM 15-AMP. BRANCH CIRCUIT. FAILURE TO CONNECT IN THIS WAY CAN RESULT IN INJURY FROM SHOCK OR FIRE.

WARNING: The warnings, cautions, and instructions discussed in this instruction manual cannot cover all possible conditions and situations that may occur. It must be understood by the operator that common sense and caution are factors which cannot be built into this product, but must be supplied by the operator.

DOUBLE INSULATION

Double insulated tools are equipped with a polarized two-prong plug (one blade is wider than the other). This plug will fit in a polarized outlet only one way. If the plug does not fit fully into the outlet, reverse the plug. If it still does not fit, contact a qualified electrician to install a polarized outlet. Do not alter or change the plug in any way. Double insulation eliminates the need for three wire grounded power supply and grounded power cords. See Fig.1.

EXTENSION CORDS

Improper use of extension cords may cause inefficient operation of your tool which can result in overheating. Be sure your extension cord is rated to allow sufficient current flow to the motor. If you are using the tool outdoors, use an extension cord rated for outdoor use (signified by "WA" on the jacket). The extension cord must have a minimum wire size depending on the amperage of the tool and the length of the extension cord. This size is determined by its AWG (American Wire Gauge) rating. The smaller the gauge, the greater the cable's capacity. The amount of cords used does not matter: Total length determines the minimum AWG rating. Every cord must meet the AWG rating. Use the chart Fig.2 to determine what AWG rating is required for your situation. Cord length is rated in feet.

SPECIFICATIONS

Model	8531LP-B
Voltage	110V
Horsepower	5 HP (peak)
Amperage	10A
Phase	1
Hertz	60Hz
Tank size	8 Gallon (US)/30 liters
Air flow	127 CFM
Vacuum pressure (inches of water)58.4"

110V POLARIZED PLUG & OUTLET

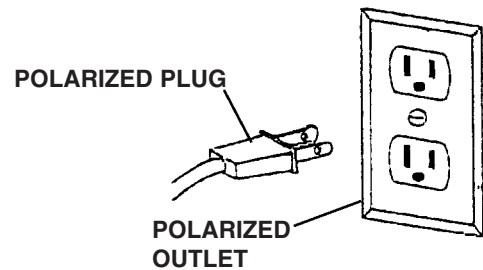


FIGURE 1

<u>LENGTH OF CONDUCTOR</u>	<u>WIRE SIZES REQUIRED (AMERICAN WIRE GAUGE)</u>
	<u>110V LINES</u>
0-25 FEET	NO.14
26-50 FEET	NO.14
51-100 FEET	NO.12

FIGURE 2

UNPACKING & ASSEMBLING YOUR VACUUM



ATTENTION! The vacuum accessories are packed inside the vacuum tank.

UNPACKING YOUR VACUUM

Remove the entire contents of the carton, please note that most of the accessories are packed inside the vacuum tank. To access these accessories, push the cover latches (step 1) Fig.3 inward, lift the tank cover/motor assembly (step 2) and then remove the accessories inside the tank.

WARNING! DO NOT CONNECT THE POWER CORD TO THE POWER SOURCE UNTIL THE FOLLOWING ASSEMBLY AND SET-UP INSTRUCTIONS HAVE BEEN DONE.

CASTER WHEEL ASSEMBLY

Four caster wheels are included and should be assembled to the bottom of the tank.

- 1) With the tank cover/motor assembly removed, turn the tank upside down. Insert the caster wheels (A) Fig.4 into the bottom of the tank as shown.
- 2) Make sure each caster wheel is pushed down all the way, then secure each caster wheel in place using the supplied screws and a screwdriver.

INSTALLING THE CORRECT FILTER(S) FOR THE APPLICATION

Before reinstalling the cover/motor assembly on, it is important to determine the desired cleaning application, wet or dry vacuuming. Each cleaning application requires different filters and/or dust bag.

When vacuuming dry materials, to ensure proper filtration, the foam filter should be used when vacuuming coarse materials with low dust for maximum air flow. The re-usable filter can and should be used together with the foam filter. Install optional cartridge filter instead of both other filters when vacuuming coarse and dusty materials. Place the cover/motor assembly upside down, slide the foam filter (A) Fig.5 or optional cartridge filter over the cage (B). If you installed the foam filter, then slide the re-usable filter over the foam filter. Now an optional dust bag (C) can be installed to the inner portion of the inlet. Fit the dust bag flange over the inner inlet, taking care not to damage the dust bag.

When vacuuming wet materials, to ensure proper filtration, the foam filter must be installed. Place the cover/motor assembly upside down, slide the foam filter (A) Fig.5 over the cage (B).

Reposition and secure the cover/motor assembly to the tank.

HOSE, WANDS AND ACCESSORY ASSEMBLY

- 1) Install the locking end of the hose Fig.6 to the vacuum inlet (front of the vacuum) by inserting the locking end and turning clockwise to lock it in place.
- 2) Assemble the 2 extension wands together and then attach the hose to the extension wand assembly.
- 3) Attach either the floor sweep or crevice tool to the other end of the extension wand assembly.

INSTALLING NOISE DIFFUSER

For quiet operation during vacuuming operations, a noise diffuser is included and should be installed to the blower outlet (rear of vacuum).

- 1) Install the noise diffuser (A) Fig.7 into the blower outlet (B) by inserting the locking end and turning clockwise to lock it in place.



FIGURE 3

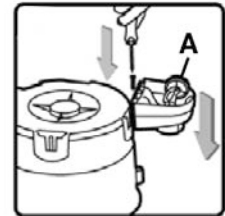


FIGURE 4

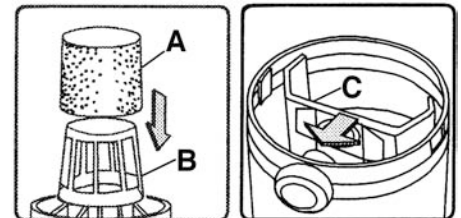


FIGURE 5

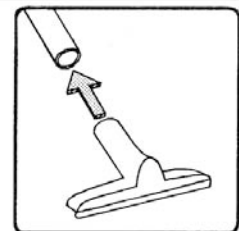
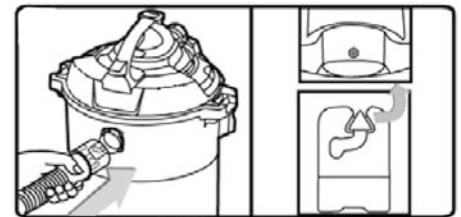


FIGURE 6

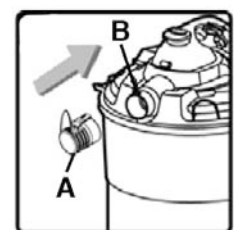


FIGURE 7



OPERATION

DRY VACUUMING OPERATIONAL STEPS

Before vacuuming dry materials, it is important that you have read and understood the safety rules in this manual.

- 1) Unplug the power cord from the power source.
- 2) Install a clean and dry foam filter. If the vacuuming operation is extremely dusty, install the reusable filter over the foam filter or only install an optional cartridge filter instead of both other filters. If it is necessary to vacuum dry materials and you have just finished vacuuming wet materials, the foam or cartridge filter must be completely dried or else they will clog up quickly and will be difficult to clean. The foam or cartridge filter can be dried quickly by running the vacuum for 5-10 minutes without the hose installed.
- 3) If desired, install an optional disposable dust bag on the inside of the tank to the inner portion of the inlet. Fit the dust bag flange over the inner inlet, taking care not to damage the dust bag.
- 4) Reposition and secure the cover/motor assembly to the tank.
- 5) Attach the hose to the inlet on the front of the vacuum.
- 6) Assemble the 2 extension wands together.
- 7) Attach either the floor sweep or the crevice tool to the other end of the extension wand.
- 8) Plug the power cord to a power source.
- 9) Start the vacuum by pushing the On/Off switch to the On position as shown in Fig.10. The On position is indicated by the international symbol "I" on the switch.
- 10) Once the vacuuming operation is finished, push the switch to the Off position indicated by the international symbol "O" on the switch and unplug the power cord from the power source.
- 11) Remove the cover/motor assembly and lay it aside, being careful not to damage the filters and dump the tank contents into a suitable waste disposal container, or dispose of the dust bag.
Airborn dust will be produced when cleaning, wear dust mask!

Warning!

Never use optional disposable dust bag, optional cartridge and re-usable filters for vacuuming wet materials. When vacuuming fine dust, it will be necessary to clean the foam, re-usable and optional cartridge filters at more frequent intervals.

WET VACUUMING OPERATIONAL STEPS

Before vacuuming wet materials, it is important that you have read and understood the safety rules in this manual.

- 1) Unplug the power cord from the power source.
- 2) Install a clean and dry foam filter. If wet vacuuming under normal conditions (small amounts of liquid pick-up), the foam and re-usable filters can be installed, but when vacuuming large amounts of liquid, only install the foam filter, see Fig.11. A dust bag can not be used for wet vacuuming. Make sure the inside of the tank is clean.
- 3) Reposition and secure the cover/motor assembly to the tank.
- 4) Attach the hose to the inlet on the front of the vacuum.
- 5) Attach either the floor sweep or the crevice tool to the other end of the extension wand assembly. For wet applications, turn the brush/squeegee assembly around so the squeegee is facing outwards, this can be done by pressing the 2 snap points at each end of the floor sweep, the assembly will pop out, flip the assembly around and snap it back into place.
- 6) Plug the power cord to a power source.
- 7) Start the vacuum by pushing the On/Off switch to the On position as shown in Fig.12. The On position is indicated by the international symbol "I" on the switch.
- 8) When vacuuming large amounts of liquid, do not completely immerse the nozzle accessory in the liquid, leave a gap at the top of the nozzle accessory opening to allow air inflow.
- 9) Once the vacuuming operation is finished, push the switch to the Off position indicated by the international symbol "O" on the switch and unplug the power cord from the power source.

Warning!

Never use a disposable dust bag, cartridge and re-usable filters for vacuuming wet materials. The foam filter should be cleaned after each wet vacuuming operation. Should it become necessary to pick up the vacuum to move it, DO NOT pick up the vacuum by the top handle unless the tank is empty. Do not pull the vacuum by the hose, this may tip the vacuum over if the wheels are obstructed in any way.

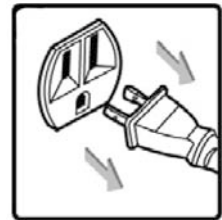


FIGURE 8

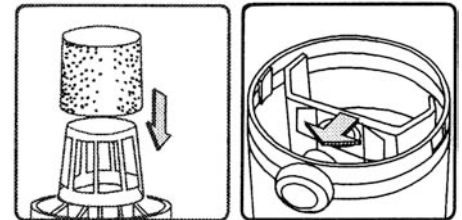


FIGURE 9

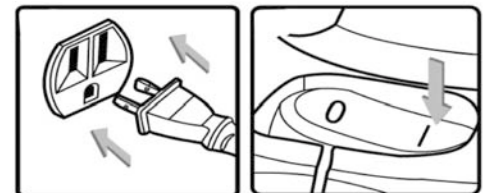


FIGURE 10

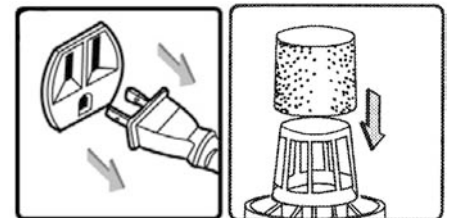


FIGURE 11

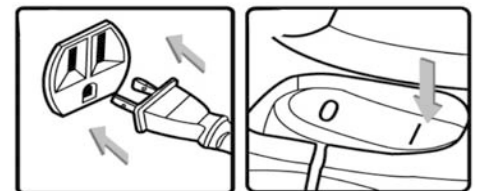


FIGURE 12

OPERATION



WET VACUUMING OPERATIONAL STEPS

AUTOMATIC SUCTION SHUT-OFF AND EMPTYING LIQUID FROM TANK

This section relates to wet vacuuming operations. This vacuum is fitted with an automatic suction shut-off float cup (A) Fig.13 which floats up when the liquid level increases in the tank, it then stops the suction action when the tank has reached its maximum capacity of liquid. Make sure the float cup is clean at all times.

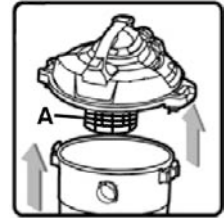


FIGURE 13

You will notice an increased motor speed, when this happens;

- 1) Turn off the vacuum immediately and unplug the power cord from the power source.
- 2) Remove the cover/motor assembly and lay it aside, being careful not to damage the filters, empty the tank contents into a suitable waste disposal container by removing the drain cap (A) Fig.14 found on the lower front of the tank.
- 3) The inside of the tank should be cleaned, also check the foam filter and clean it from the inside out if necessary.
- 4) To continue vacuuming wet materials, reposition and secure the cover/motor assembly, plug the power cord to a power source and proceed.



FIGURE 14

USING THE DETACHABLE BLOWER

This 8 gallon (US) Wet•Dry Vacuum converts into a detachable leaf blower, to use the detachable blower;

- 1) Make sure the vacuum is in the Off (0) position and unplug the power cord from the power source.
- 2) Remove the noise diffuser (A) Fig.15 from the blower outlet.
- 3) Grasp the top handle and press the blower release button (B) and lift the detachable blower unit from the vacuum motor/blower housing. See Fig.15.
- 4) Insert the blower adaptor fitting (A) Fig.16 into the blower outlet and then fit the desired 2-1/2" blower accessory such as the extension, blower nozzle or the cone nozzle to the blower adaptor fitting.
- 5) Plug the power cord to the power source, firmly hold the blower unit and turn it on by placing the switch in the On (I) position.



FIGURE 15

WARNING!

Always wear safety glasses while operating the detachable blower unit. Ear protection is recommended to reduce the risk of hearing damage, especially during extended operation. Wearing a dust mask is also recommended in case the blowing operation creates dust that might be inhaled. Only direct the blower air discharge towards your work area, **never towards a person or animal**. Never use as a sprayer.

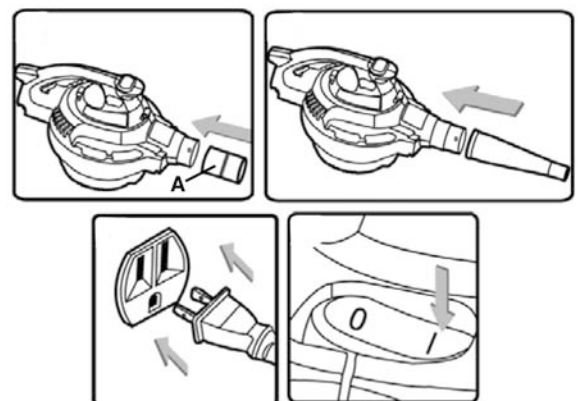


FIGURE 16



STANDARD/OPTIONAL ACCESSORIES & MAINTENANCE

STANDARD AND OPTIONAL ACCESSORIES

The following chart lists the standard accessories included and the available optional accessories for this wet•dry vacuum. Please note that these accessories are not covered under warranty and are available at your nearest King Canada distributor.

Model	Description	Usage	Included/Optional
KVAC-1010	30L Dust bags- 3pc. kit	Dry Vacuuming Applications	Optional
KVAC-1040	Foam Filter- 1pc.	Wet•Dry Vacuuming Applications	1pc. Included
KVAC-1060	Re-usable Filter- 1pc.	Wet•Dry Vacuuming Applications	1pc. Included
KVAC-1070	Cartridge Filter- 1pc.	Dry Vacuuming Applications	Optional
KVAC-1183	6ft x 1-1/4" hose	General purpose	1pc. Included
KVAC-1101	1-1/4" Round Brush- 1pc.	Upholstery and car interiors	Optional
KVAC-1103	1-1/4" Gulper Tool- 1pc.	General purpose	Optional
KVAC-1105	1-1/4" Crevice Tool- 1pc.	General purpose	1pc. Included
KVAC-1107	10" x 1-1/4" Floop Sweep- 1pc.	General purpose-reversible attachment	1pc. Included
KVAC-1111	2pc. Extension wand kit	General purpose	2pc. kit Included
KVAC-1117	2-1/2" Blower extension	Blower	1pc. Included
KVAC-1124	Caster Wheels- 4pc. kit	Replacement kit	4pcs. Included
KVAC-1125	2-1/2" Cone nozzle	Blower	1pc. Included
KVAC-1126	2-1/2" Blower nozzle	Blower	1pc. Included
KVAC-1130	High Efficiency Cartridge Filter	Drywall and fine dust applications	Optional
KVAC-1132	30L High Efficiency Dust bags- 3pc. kit	Drywall and fine dust applications	Optional

MAINTAINING YOUR VACUUM AND ACCESSORIES

Warning! To reduce the risk of injury and electrical shock, unplug the power cord from the power source. Airborn dust will be produced when cleaning, wear dust mask!

To maintain peak vacuum performance, the foam and re-usable filters must be cleaned often. When not in use, wrap the power cord around the power cord posts (top handle).

Filter maintenance- Clean the foam filter and re-usable filter by washing them inside out in a mild soapy water and then rince with clean water, see Fig.17. Clean optional cartridge filter in a mild soapy water and then rince with clean water. Allow these filters to dry completely before using.

Blower foam pad maintenance- After using the detachable blower, make sure the bottom of the blower is not blocked by debris or leaves. The blower unit comes with an internal foam pad (A) Fig.18. If this foam pad needs cleaning, remove the four screws that hold the bottom shield. Remove bottom shield (B) and the foam pad from the blower unit.Clean the foam pad in a mild soapy water and then rince with clean water. Allow the foam pad to dry completely before reinstalling it into the lower unit.

General Maintenance and Inspection- The inside of the tank, hose, extension wands and accessories should be cleaned after every use, this cleaning should only be done outdoors with the power cord disconnected from the power source. Check the condition of the power cord and make sure it is not damaged. Also check the condition of the filters for tears and small holes. Do not use filters with tears or small holes, replace with new filters.

TROUBLESHOOTING

Dust comes from the motor cover-

Place/replace the dust bag if dust bag is missing or damaged or empty the tank.

Reduced efficiency/increased motor speed-

Inlet is block or tank is full- Unblock inlet or empty tank through tank drain.

PARTS DIAGRAM & PARTS LISTS

Refer to the Parts section of the King Canada web site for the most updated parts diagram and parts list.

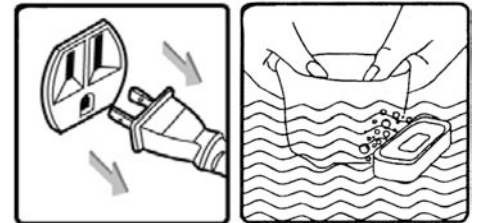


FIGURE 17

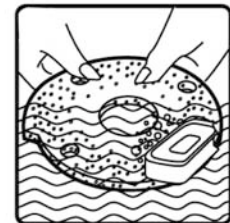
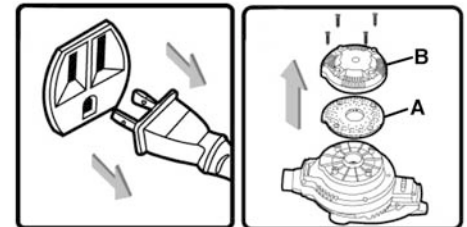


FIGURE 18