

Installation & Instruction Manual

BATHROOM FORCED AIR HEATER



SILBH2060 Series

(List of replacement components included)

WARNING * VERY IMPORTANT *** WARNING *** VERY IMPORTANT *** WARNING**

Before installing and operating this product, the owner and/or installer must read, understand and follow these instructions and keep them handy for future reference. If these instructions are not respected, the warranty will be considered null & void and the manufacturer deems no further responsibility for this product.

This product has been designed to heat, therefore the risk of fire is possible if it is not properly installed & maintained as per the instruction manual.

Not following these instructions could lead to serious injury causing bodily harm, property damage, and electrocutions resulting in death.

This product must be installed by a certified master electrician, in accordance with all local & national building codes.

It is the user's responsibility to assure that materials such as blankets, towels, beds, furniture, laundry baskets, clothing, etc. do not come in contact with, nor come within 4 inches (10 centimetres) of the heater. Not heeding this warning could lead to fire.

Never obstruct the airflow locations, i.e., air intake and exhaust. This could cause the product to overheat and lead to fire.

Certain locations are dustier than others. It is therefore the user's responsibility to determine whether or not the product must be cleaned based on dirt build-up on the unit's air intake & exhaust, as well as inside the unit. Accumulated dust and dirt could cause components to become defective, which could lead to fire.

If the installer and/or user modifies this product in any way, he/she will be held responsible for any damages resulting from this modification.

Assure that the heating capacity of the unit be sufficient for the size of room it is intended to heat. If the capacity is insufficient, the heater will work constantly, causing it to discolour (turn yellow) and/or prematurely deteriorate.

Suggested calculation to determine heating requirements :

10 watts / square foot (0.3 m²) based on a ceiling height of 8 feet (2.44 meters).

1.2 watts / cubic foot (0.3 m³) for locations where the ceiling height exceeds 8 feet (2.44 meters).

An activated thermal protection (overheat sensor) warns us that the heater has been subjected to an abnormal condition. If this occurs, it is highly recommended that the unit be inspected by an electrician or reputable repair centre to assure that it is not ruined.

A heater contains components that become hot and produce electrical sparks. Do not operate it in areas where gasoline, paint, or flammable liquids are used or stored.

This product guarantees the replacement of all parts and labour for a period of one year.

This guarantee is limited only to the factory repair of the unit and does not cover the costs of de-installation, transport, and re-installation.

SPECIFICATIONS

| BATHROOM FORCED AIR HEATER | |
|----------------------------|------------------|
| VOLTS | 240/208 V |
| WATTS | 1200/2000 W |
| AMPERES | 8.3 A |
| WEIGHT | 7.50 lb / 3.4 kg |
| DEPTH | 5 1/2" / 140 mm |
| WIDTH | 10 5/8" / 270 mm |
| HEIGHT | 16 1/2" / 420 mm |



IMPORTANT NOTES

This unit must be permanently secured to one of the bathroom walls and must only be used to heat the room where it is installed.

Make sure the main power supply complies with the rating plate: 240/208 V AC, 60/50 Hz.

Never let children play with the unit. Caution! When the unit is on, the air outlet grille can reach very high temperatures (more than 80 °C).

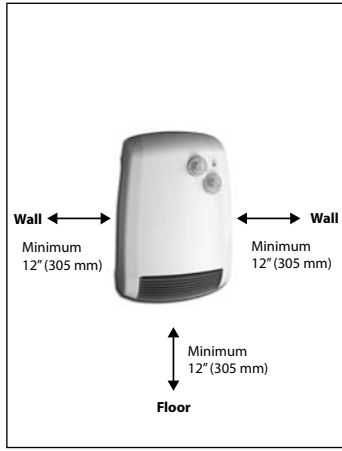
Never use this unit within arm's reach while in the shower, the bathtub or near a sink.

Position the unit so the plug is easy to reach.

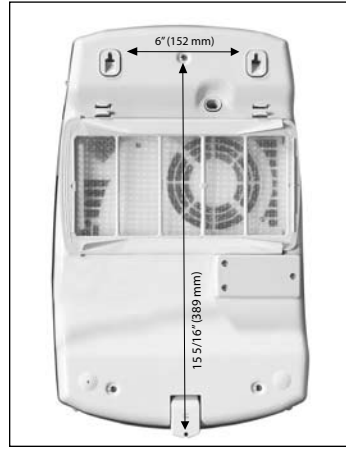
Never secure the unit to walls made of synthetic materials.

Only use the fan heater as a wall fitment and in the vertical position.

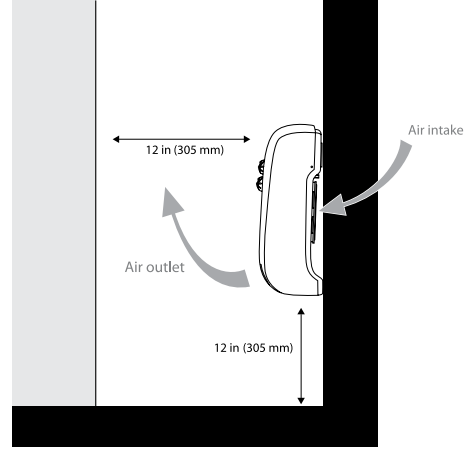
INSTALLATION



III. 01



III. 02



III. 03

- The unit must be secured to a wall, 12 in (305 mm) away from the floor and adjacent walls (III. 01). The unit cannot be covered or hidden by a door.
- Drill three holes with a diameter slightly smaller than the one for the plastic pins provided.
- Insert the pins.
- Insert the two top screws provided, leaving a gap of 5/16 in (8 mm) between the screw head and the wall (III. 02).
- Hang the unit on the two installed screws while holding it securely in your hands;
CAUTION! Before letting go of the unit, check that it is securely hung on the two screws.
- Secure the unit with the third screw at the bottom (III. 02).

The illustration 03 on the right indicates the airflow generated by the heater. This air corridor must remain clear in order to allow good air circulation and to ensure that the unit operates efficiently. Leave **at least 12 in (305 mm) in front**.

Do not install the heater below an electrical convenience outlet.

ELECTRICAL CONNECTION

- Make the electrical connections inside the junction box located at the back of the unit (III.04).
- Installation of this product must be made in accordance with all national and local building codes.
- The electrical connections must be made with a 12-gauge 2-conductor wire complete with ground.



III. 04

OPERATION



The fan heater has two knobs, one for the 60-minute timer and one for the thermostat.

The unit has two operating modes:

ROOM WARM-UP WITH TEMPERATURE CONTROL

From the position marked "❄", turn the thermostat knob clockwise until a clicking noise is heard; the unit is turned on at a power of 1200 W and the warning light comes on.

The thermostat maintains the required room temperature by automatically turning on and off the fan heater. The more you turn the knob clockwise, the higher the constant temperature will be. The thermostat maximum setting is about 35 °C and the minimum setting "❄" is about 5 °C.

Setting the thermostat:

With a room temperature above 35 °C, it is normal for the thermostat to not turn on the fan heater, even at the maximum setting.

With a room temperature too low (under 5 °C), it is normal for the thermostat to maintain the unit on, even at the minimum setting.

To optimize thermostat usage:

- Set the thermostat to the maximum setting and operate the unit until a comfortable temperature is reached;
- Then, turn the thermostat knob counter-clockwise until a click is heard (the unit is turned off);
- Slightly turn (just a little) the thermostat knob clockwise;
- At this setting, the thermostat maintains the chosen room temperature.

QUICK ROOM WARM-UP

With the room temperature set at the required level, turn the timer knob to select the required operating time. The unit operates at 2000 W for the set time to quickly heat the room and then maintains the room temperature set by the thermostat at a power of 1200 W.

SAFETY IN CASE OF ABNORMAL OPERATION

In the event the unit overheats, the built-in protection system automatically deactivates the heating elements and the motor, effectively stopping the fan heater operation. In this case, the unit is inactive, but the warning lamp is on.

Procedures to be followed:

- Turn off the fan heater and let it cool for about 15-20 minutes. It is imperative to set the thermostat and the timer to the "OFF" position in order to re-start it;
- Check if the dust filter is blocked and if so, clean and reinstall it;
- Locate potential overheating factors (i.e. obstruction in front of the air outlet or inlet grille, unusual dirt accumulation, etc.);
- Turn the fan heater on again and check for proper operation. If you cannot get your unit to work, bring it back where you purchased it or have it verified by a certified electrician.

MAINTENANCE

FILTER



Your unit has a filter protecting the heating elements against dust and dirt.

The filter can be removed and inserted from the right or the left side.

For optimal operation, we recommend cleaning the filter once every 2 months and **making sure to reinstall it on the unit.**

Regularly vacuum the front grille to remove the dust. Accumulated dust and lint at the air outlet can reduce the unit's performance and even damage it. To clean the unit, use a slightly damp cloth. Note that cigarette smoke can cause unit fading, despite the cleaning.

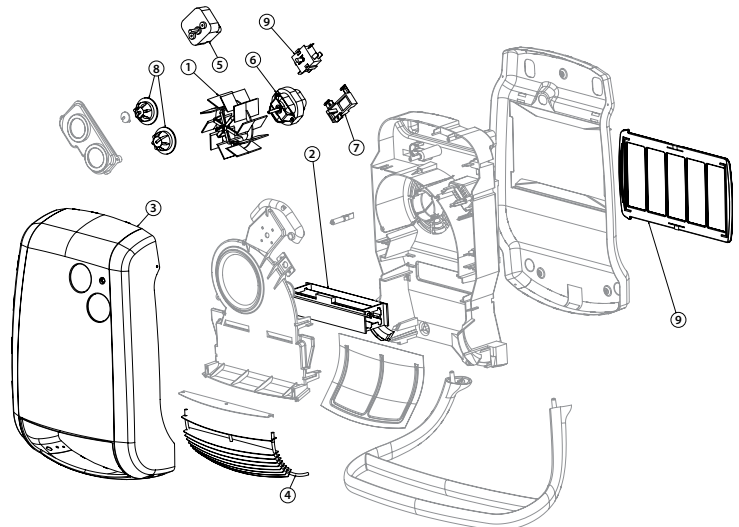
WARRANTY

This unit is guaranteed for a period of one year. Should it become defective during that period, it must be returned to the point of purchase with a copy of the invoice. You may also contact our Customer Service (with a copy of your invoice in hand).

In order for this warranty to be valid, the unit must be secured according to the above-mentioned instructions and regularly maintained.

LIST OF REPLACEMENT COMPONENTS

| NUMBER | ELEMENT | DESCRIPTION |
|--------|----------------|---------------------------------------|
| 1 | BLO-SILBH2060 | BLOWER WHEEL |
| 2 | ELF-SILBH2060 | ELEMENT WITH PROTECTION AND FUSE LINK |
| 3 | COV-SILBH2060 | FRONT COVER |
| 4 | GRI-SILBH2060 | BOTTOM GRILL ONLY |
| 5 | TIM-SILBH2060 | 60-MINUTE TIMER |
| 6 | MO-SILBH2060 | MOTOR |
| 7 | ST-SILBH2060 | THERMOSTAT |
| 8 | BOUT-SILBH2060 | KNOB |
| 9 | FIL-SILBH2060 | BACK FILTER |



This unit has been approved cCSAus, for your peace of mind.

Imported par Stelpro Design Inc.
Made in Italy