



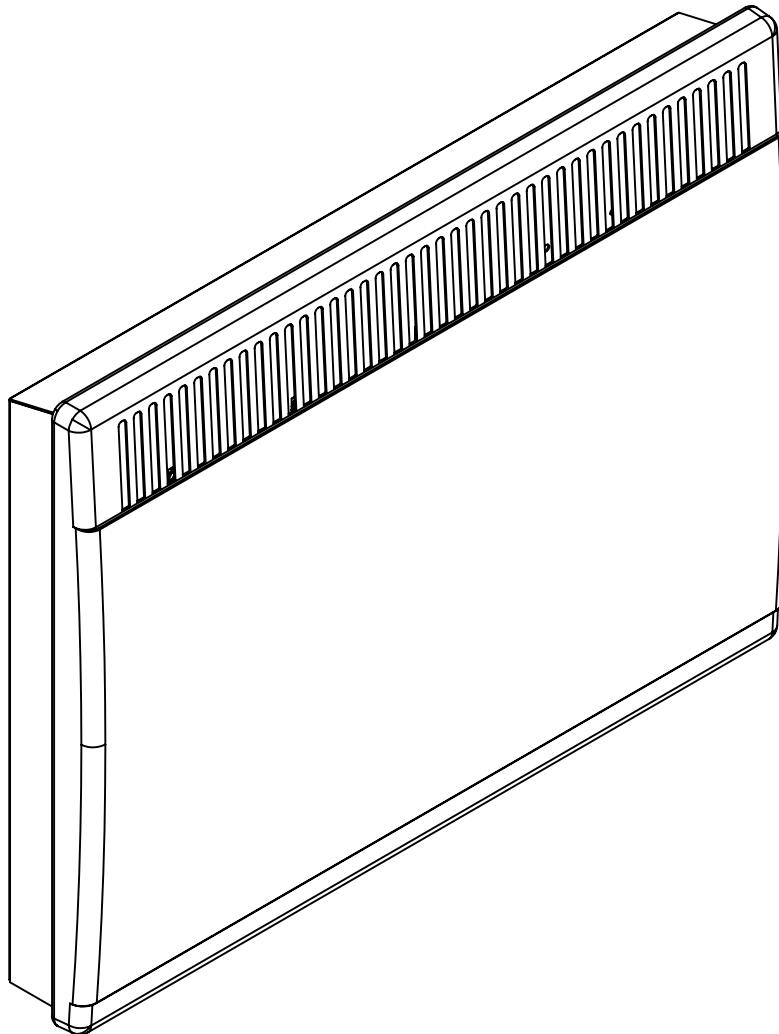
www.stelpro.com



User's guide

“SC” series Rounded-corner convector

Replacement component list included



This unit complies with
the CSA standards

For further information or to consult this guide online, please visit our Web site.

INSSC0210

WARNING **WARNING** **WARNING** **WARNING**

Before installing and operating this product, the user and/or installer must read, understand and follow these instructions and keep them handy for future reference. If these instructions are not followed, the warranty will be considered null and void and the manufacturer deems no further responsibility for this product.

This product must be installed by a qualified person and connected by a **certified electrician**, according to the **electrical and building codes** effective in your region.

The following instructions must be adhered to in order to avoid personal injuries or property damages, serious injuries and potentially fatal electric shocks.

Protect the heating unit with the appropriate circuit breaker or fuse, in accordance with the nameplate.

Make sure the line voltage (volt) is consistent with that indicated on the unit's nameplate.

This unit must be **grounded**.

Switch off the power at the circuit breaker/fuse before installing, repairing and cleaning the unit.

Make sure the unit is appropriate for the intended use (if needed, refer to the product catalog or a representative).

Recommended heating capacity:

1.25 W/cubic foot (0.03 m³).

It corresponds to **10 W/square foot (0.09 m²)** based on a standard ceiling height of 8 feet (2.44 m). The recommended capacity is usually sufficient for normal heating needs. Please note that the insulation quality of walls and windows are some of the factors that influence heat losses, which modify the required capacity to heat a room. If needed, refer to a specialist who will be able to calculate these heat losses and optimize the required capacity or consult the "Online heating calculation" section of the Stelpro Design Web site (residential buildings). To heat a large room and to increase your comfort, it is recommended to install several units instead of one. For example, 2 X 1000 W rather than 1 X 2000 W.

Do not install the unit where objects or pieces of furniture could be heat damaged.

If the unit's capacity is insufficient for the size of the room, it will be in operation continuously, and may become defective earlier and turn yellow.

Respect distances and positions indicated in the installation section.

If the installer or user modifies the unit, they will be held responsible for any damage resulting from this modification, and the CSA certification could be void.

This unit must not come into contact with a water source and must be protected from splashes (e.g. a wet mop). Do not use it if any part has been immersed. Moreover, do not turn it on or off when standing in water or if your hands are wet.

When mounting the unit, make sure that the anchorage used can support the total weight of the unit with the mounting brackets.

When cutting or drilling into a wall, do not damage electrical wiring and other hidden utilities.

When starting up the unit for the first time or after a long period, it is normal that it produces some temporary odours and whitish smoke.

Because this unit is hot when in use, it may pose risks even in normal operation. Therefore, be careful and responsible when using it. To avoid burns, do not let bare skin touch hot surfaces. Let the unit cool down for a few minutes before handling it (it stays warm for some time after shut-down).

The bottom of this unit must be installed at least **4 inches (10.2 cm)** from the floor and **6 inches (15.2 cm)** from any adjacent surfaces. However, make sure objects or pieces of furniture such as, but not limited to, blankets, towels, beds, laundry baskets, clothing, papers, etc. do not come into contact with the unit and keep them at least **12 inches (30.5 cm)** from the unit since they are more flammable than walls and floors. Failure to comply with this warning could lead to a fire. Some materials are more heat-sensitive than others, so make sure those near the unit can withstand heat.

Never block air vents. This obstruction could lead to overheating, which could result in a fire.

Do not insert or allow foreign objects to enter any air vent as this may cause electric shocks, a fire or damages to the unit.

This unit has hot and arcing or sparking parts inside. It is not designed to be used or stored in wet areas or areas containing flammable liquids, combustible materials or corrosive, abrasive, chemical, explosive and flammable substances such as, but not limited to, gasoline, paint, chlorine, sawdust and cleaning products.

Some areas are dustier than others. Thus, it is the user's responsibility to evaluate if the unit **must be cleaned based** on the amount of dirt accumulated on and inside air vents. Accumulated dirt can lead to a component malfunction or give a yellowish colour to unit. Failure to install and maintain unit in accordance with these instructions poses a fire hazard.

Thermal protection activation indicates that the unit has been subjected to abnormal operating conditions. If the thermal protection remains activated or activates and deactivates repeatedly, it is recommended that a qualified electrician or a certified repair centre examine the unit in order to make sure it is not damaged. (Refer to the limited warranty.)

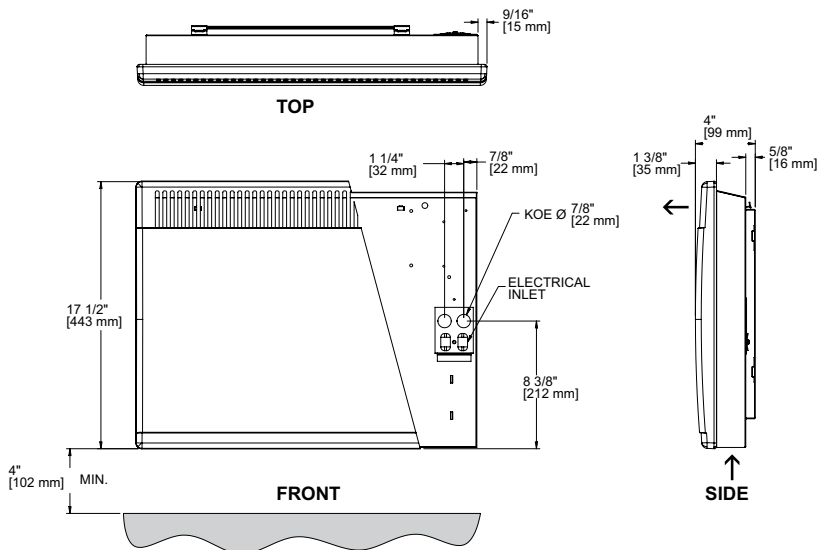
If the unit is damaged or defective, cut off power supply at circuit breaker and call a certified repair centre. (Refer to the limited warranty) If the unit is damaged or defective, cut off power supply at circuit breaker and call a certified repair centre. (Refer to the limited warranty.)

SELECTION TABLE

Type	watts	volts	length		kg	lb
			mm	in		
SC101	1000	120	581	22 7/8	5.5	12.1
SC108	1000	208	581	22 7/8	5.5	12.1
SC102	1000/750	240/208	581	22 7/8	5.5	12.1
SC107	1000	277	581	22 7/8	5.5	12.1
SC103	1000	347	581	22 7/8	5.5	12.1
SC105	1000	480	581	22 7/8	5.5	12.1
SC106	1000	600	581	22 7/8	5.5	12.1
SC151	1500	120	726	28 9/16	7.2	15.8
SC158	1500	208	726	28 9/16	7.2	15.8
SC152	1500/1125	240/208	726	28 9/16	7.2	15.8
SC157	1500	277	726	28 9/16	7.2	15.8
SC153	1500	347	726	28 9/16	7.2	15.8
SC155	1500	480	726	28 9/16	7.2	15.8
SC156	1500	600	726	28 9/16	7.2	15.8
SC208	2000	208	889	35	8.6	19
SC202	2000/1500	240/208	889	35	8.6	19
SC207	2000	277	889	35	8.6	19
SC203	2000	347	889	35	8.6	19
SC205	2000	480	889	35	8.6	19
SC206	2000	600	889	35	8.6	19

Add W for white or A for almond.

TECHNICAL DRAWINGS



INSTALLATION

N.B. Cut off power supply at circuit breaker/fuse before proceeding to the installation.

- The unit should be installed at least **4 in (10.2 cm)** from the floor and **6 in (15 cm)** from adjacent walls.
- Before operating the unit, make sure that both the air inlet (bottom) and air outlet (front) are free from obstruction.

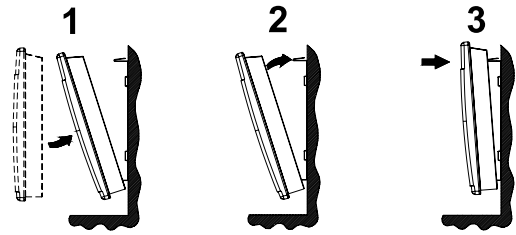
• Installation of the wall rack hooks

1. Remove the unit from the wall rack hooks.
2. With a pencil, mark the wall at the four anchoring points of the rack. (It must be placed at least 5 in (12.7 cm) above the ground).
3. Fasten the rack to the wall, making sure it is level. When drilling into a wall or ceiling, do not damage electrical wiring and other hidden utilities.

N.B. The wall on which the convector will be installed must be straight in order for the wall rack to lie perfectly flat without any pressure points. Otherwise, brackets could malfunction.

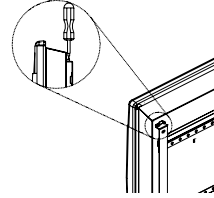
• Installation of the unit onto the wall rack

1. Insert the bottom hooks of the rack into the unit.
2. Tip the top of the unit toward the wall.
3. Latch the unit onto the rack by pressing toward the wall.



• Removing the unit from the wall rack

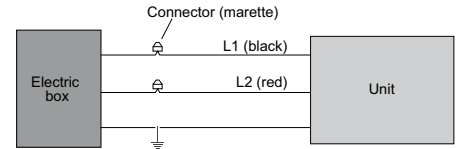
1. Using a screwdriver, press on each clip. (See the illustration)
2. Pull the upper part of the unit toward you to disengage the hooks.
3. Pull the unit off the lower hooks.



ELECTRICAL CONNECTION

This unit must be connected by a certified electrician. Connect the bare wire (ground) to the green screw. Connect wires from the electric box to the unit's supply leads.

N.B. This product must be connected by a qualified electrician, according to the electrical and building codes effective in your region.



OPERATION

This unit must be controlled by a thermostat, ideally an electronic thermostat.

MAINTENANCE

Cut off power supply at breaker/fuse before cleaning this unit. Use a soft rag for dusting. When cleaning, use only a damp rag and non-abrasive dish soap. Do not use abrasive or chemical cleaners because they can damage the finishing. If the unit is used in a very dusty location, use a vacuum brush to remove dust and other foreign objects from the grilles. If needed, vacuum out the dust inside the unit. Note that cigarette smoke can yellow the discharge grille; the best way to prevent this problem is to clean the unit on a regular basis.

Do not use cleaning products identified with these symbols:

TROUBLESHOOTING

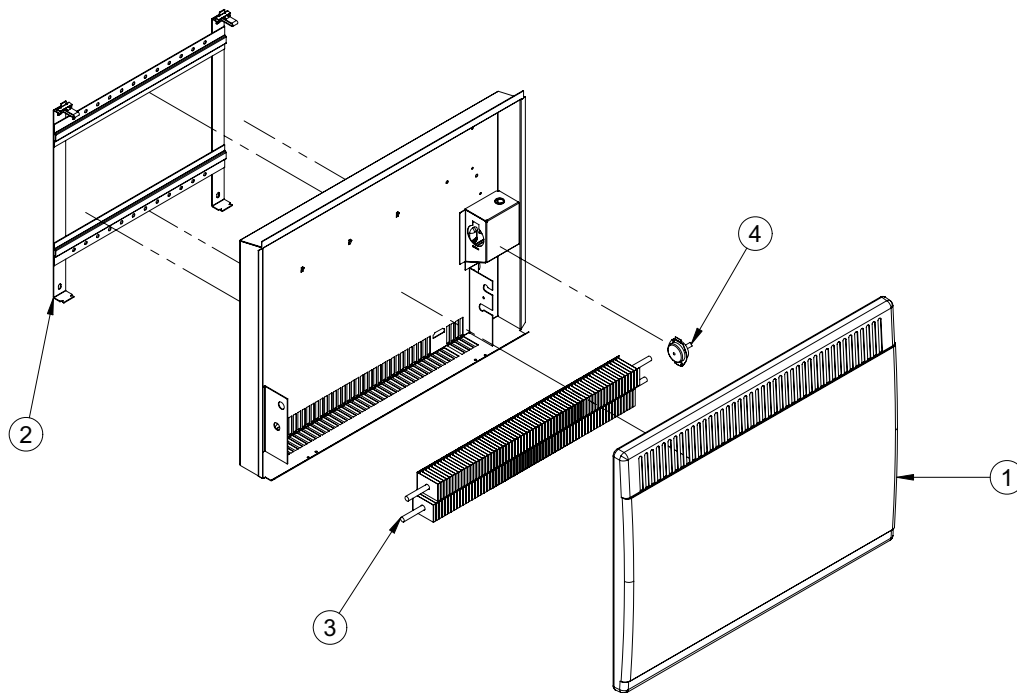
PROBLEM	DEFECTIVE PART OR PART TO CHECK
The unit does not work	- Defective thermostat or wrong thermostat setting - Open circuit breaker or fuse - Thermal protection activated - Faulty connections
The unit runs continuously	- Defective thermostat or wrong thermostat setting
The enclosure is extremely hot	- Defective thermal protection - Blocked air vents
The desired room temperature cannot be reached	- One or more defective elements - Defective thermostat or wrong thermostat setting - Voltage lower than indicated on the nameplate - Heat losses greater than the unit's capacity
Overheating	- Defective thermostat or wrong thermostat setting
The unit cycles under control of the thermal protection (overheat indicator)	- Blocked air vents
The heater is on and the breaker trips	- Faulty connections - Voltage higher than that indicated on the nameplate

N.B. If you do not solve the problem after checking these points, cut off the power supply at the main electrical panel and contact our customer service (please refer to the limited warranty to obtain the phone numbers).

REPLACEMENT COMPONENT LIST

# REF.	# PART	DESCRIPTION
1	EUC0500-10-1	ELEMENT 500 W-120 V
1	EUC0500-10-3	ELEMENT 500 W-174 V
1	EUC0500-10-5	ELEMENT 500 W-240 V
1	EUC0500-10-6	ELEMENT 500 W-300 V
1	EUC0500-10-7	ELEMENT 500 W-139 V
1	EUC0500-10-8	ELEMENT 500 W-104 V
1	EUC0750-15-1	ELEMENT 750 W-120 V
1	EUC0750-15-3	ELEMENT 750 W-174 V
1	EUC0750-15-5	ELEMENT 750 W-240 V
1	EUC0750-15-6	ELEMENT 750 W-300 V
1	EUC0750-15-7	ELEMENT 750 W-139 V
1	EUC0750-15-8	ELEMENT 750 W-104 V
1	EUC1000-20-1	ELEMENT 1000 W-120 V
1	EUC1000-20-3	ELEMENT 1000 W-174 V
1	EUC1000-20-5	ELEMENT 1000 W-240 V
1	EUC1000-20-6	ELEMENT 1000 W-300 V
1	EUC1000-20-7	ELEMENT 1000 W-139 V
1	EUC1000-20-8	ELEMENT 1000 W-104 V
2	M-SC150000B0	WALL BRACKET 1500-2000 W
2	M-SC100000B0	WALL BRACKET 1000 W
3	M-SC100005Z*	FRONT COVER 1000 W
3	M-SC150005Z*	FRONT COVER 1500 W
3	M-SC200005Z*	FRONT COVER 2000 W
4	PROT-100	LINEAR THERMAL PROTECTION (AUTO.) (L200) 1000 W
4	PROT-102	LINEAR THERMAL PROTECTION (AUTO.) (L200) 1500-2000 W

* Add **W** for white or **A** for almond.



Limited warranty

This limited warranty is offered by Stelpro Design Inc. ("Stelpro") and applies to the following product made by Stelpro: model SC. **Please read this limited warranty carefully.** Subject to the terms of this warranty, Stelpro warrants its products and their components against defects in workmanship and/or materials for the following periods from the date of purchase: **10 years (heating element) and 1 year (other components)**. This warranty applies only to the original purchaser; it is non-transferable and cannot be extended.

Claim procedure

If at any time during the warranty period the unit becomes defective, you must cut off the power supply at the main electrical panel and contact 1) your installer or distributor, 2) your service center or 3) Stelpro's customer service department. In all cases, you must have a **copy of the invoice** and provide the **information written on the product nameplate**. Stelpro reserves the right to examine or to ask one of its representatives to examine the product itself or any part of it before honoring the warranty. Stelpro reserves the right to replace the entire unit, refund its purchase price or repair a defective part. Please note that repairs made within the warranty period must be authorized in advance in writing by Stelpro and carried out by persons authorized by Stelpro.

Before returning a product to Stelpro, you must have a Stelpro authorization number (RMA). To obtain it, call the customer service department at: **1-800-363-3414** (electricians and distributors - French), **1-800-343-1022** (electricians and distributors - English), or **1-866-766-6020** (consumers). The authorization number must be clearly written on the parcel or it will be refused.

Conditions, exclusions and disclaimer of liability

This warranty is exclusive and in lieu of all other representations and warranties (except of title), expressed or implied, and Stelpro expressly disclaims and excludes any implied warranty of merchantability or implied warranty of fitness for a particular purpose.

Stelpro's liability with respect to products is limited as provided above. Stelpro shall not be subject to any other obligations or liabilities whatsoever, whether based on contract, tort or other theories of law, with respect to goods or services furnished by it, or any undertakings, acts or omissions relating thereto. Without limiting the generality of the foregoing, Stelpro expressly disclaims any liability for property or personal injury damages, penalties, special or punitive damages, damages for lost profits, loss of use of equipment, cost of capital, cost of substitute products, facilities or services, shutdowns, slowdowns, or for other types of economic loss or for claims of a dealer's customers or any third party for such damages. Stelpro specifically disclaims all consequential, incidental and contingent damages whatsoever.

This warranty does not cover any damages or failures resulting from: 1) a faulty installation or improper storage; 2) an abusive or abnormal use, lack of maintenance, improper maintenance (other than that prescribed by Stelpro) or a use other than that for which the unit was designed; 3) a natural disaster or an event out of Stelpro's control, including, but not limited to, hurricanes, tornadoes, earthquakes, terrorist attacks, wars, overvoltage, flooding, water damages, etc. This warranty does not cover any accidental or intentional losses or damages, nor does it cover damages caused by negligence of the user or owner of the product. Moreover, it does not cover the cost of disconnection, transport, and installation.

The warranty is limited to the repair or the replacement of the unit or the refund of its purchase price, **at the discretion of Stelpro**. Any parts replaced or repaired within the warranty period with the written authorization of Stelpro will be warranted for the remainder of the original warranty period. This warranty will be considered null and void and Stelpro will have the right to refuse any claims if **products have been altered** without the written authorization of Stelpro and if the nameplate numbers have been removed or modified. This warranty does not cover scratches, dents, corrosion or discoloration caused by excessive heat, chemical cleaning products and abrasive agents. It does not cover any damage that occurred during the shipping.

Some states and provinces do not allow the exclusion or limitation of incidental or consequential damages and some of them do not allow limitations on how long an implied warranty lasts, so these exclusions or limitations may not apply to you. This warranty gives you specific legal rights and you may have other rights which vary from state to state or from province to province.



This unit complies with the CSA standards
Stelpro Design Inc.
Saint-Bruno-de-Montarville (Quebec) J3V 6L7