

**BROAN**<sup>®</sup>

*Shaping the Future of Central Vacuum*



*We couldn't predict the future of Central Vacuums, so we created it.*

*Convenient...* One look proves it. But the sleek, wall-hugging design of our new models is just the beginning. Behind its revolutionary appearance is a vacuum that's quieter than old technology vacuums, more powerful and convenient too. No guessing game! We've added a status light to the Power Unit to indicate when the debris pail is full and requires emptying. And no additional wiring is needed.

*Powerful...* Performance wasn't sacrificed for beauty. Our new motor design deep cleans far better than conventional vacuums. And with better filtration, you won't spread the dust around either. Exhausted to the exterior of your home, the microscopic dust particles that simply scatter with conventional vacuums are exported outside. Your home is cleaner and indoor air quality is improved.

Finally, don't discard your old attachments. Your current accessories can be used with our new Broan Power Units. Or, keep it as a spare kit close at hand in your workshop, hobby room or garage when you require those quick clean ups.

Sleek new shape and state-of-the-art inner core make this one of the quietest, most powerful central vacuums on the market.

Front View

Side View



# Shaping the Future of Central Vacuum

*Innovative features. Optimal efficiency. And oh-so quiet.*

## ACCURATE DEBRIS PAIL FULL LIGHTS\*

Progressive status indicator lights tell you in a glance when to empty the debris pail.



## CLEAN QUIETLY

Now, noise is suppressed better than ever before. Our revolutionary new internal sound suppression system deadens sound to a comfortable level – no external muffler is required! What's more, our new quick-mount installation brackets minimize vibration.



## SIMPLIFIED FILTER CLEANING

Just open the front-facing door panel. Tap the clean side of the filter and dirt stuck to it will fall into the debris pail – not onto the floor.



## HEPA FILTRATION. DUPONT™ TEFLON® TECHNOLOGY\*

Our high performance filters feature HEPA rated media and DuPont Teflon anti-stick technology. Dust and bacteria are trapped better than ever before.



## SNAP, DROP, DISCARD

Removing, emptying and reinstalling the debris pail is made easy with a snapping system that locks into place without twisting or turning.



## CONVENIENT INSTALLATION

Left or right hand intake ports simplify new or replacement installations. The slim profile lets the power unit fit in tight corners.



\*Available on selected models only

## Three Models to Choose From

Each model accommodates a complete range of cleaning brushes and hoses so you can customize your Broan Central Vacuum System to meet the precise needs of your home. Revolutionary filtered cyclonic action collects all debris neatly and forces it to the bottom of an easily removable debris pail.



### VX3000C

Our basic model, the VX3000C features a standard permanent filter and 475 Air Watts for efficient debris collection. This unit is also economical and compact, making it ideal for smaller homes as well as the price conscious consumer.

### VX6000C

This unit has all the features of the VX3000C but its 550 Air Watts make it ideal for small to medium size homes. It also contains a pail full indicator and permanent HEPA filter with DuPont Teflon coating to help improve indoor air quality.

### VX12000C\*

Best suited for larger homes, Broan's deluxe system contains two powerful motors to deliver an incredible 1040 Air Watts for unsurpassed cleaning action. This unit also comes with all the advanced features of the VX6000C, making it one of the cleanest systems on the market.

# Choose a Broan System That's Best for You

## Specifications

	VX3000C	VX6000C	VX12000C*
Motor Performance Power (Air Watts)	475	550	1040
For homes up to			
3,000 square feet	•		
6,000 square feet		•	
12,000 square feet			•
Water Lift (Inches H <sub>2</sub> O)	90	135	130
Air Flow (Cubic Feet per Minute)	114	130	230
Current Rating (Amps)	15	15	15
Voltage	120	120	240
Recommended Circuit (Amps)	20	20	20
On/Off Switch	•	•	•
Utility Valve with Power Unit	•	•	•
Easy access door for maintenance of cyclonic filter	•	•	•
Debris Pail Capacity (Gallons)	4	7	7
Pail Full indicator with progressive fill indication		•	•
Housing - Corrosion Resistant Flame Retardant Engineered Thermoplastic	•	•	•
Dimensions (D x W x H)	11-1/2" x 16-1/5" x 36"	11-1/2" x 17-1/5" x 39"	11-1/2" x 17-1/5" x 39"
Self-cleaning permanent HEPA Membrane Filter made with DuPont™ Teflon®		•	•
Unique oval shape for efficient cyclonic filtration	•	•	•
Built-in sound suppression system	•	•	•

Air Watts is a combination of air flow and water lift created by the power unit. The greater the Air Watts, the greater the cleaning ability of the system. This is the most effective factor in determining the system's overall power.



### Let us help you with the basics.

1 What is your home size? Include all areas and floors to be serviced by your central vacuum system.

Home Size \_\_\_\_\_ sq. ft.

2 Based on your home size, choose your power unit from the three series shown on page 5. Power Unit \_\_\_\_\_

3 Determine the number of wall inlets you will need. As a quick reference for estimating, we recommend using the relationship of 600 sq. ft. for each inlet. Based on the home square footage used above, divide that value by 600. Always round up for estimating purposes. For example, using a 2,800 sq. ft. home: Home Size of 2800 ÷ 600 = 4.6, round up to 5 inlets.

Your Home Size \_\_\_\_\_ ÷ 600 = \_\_\_\_\_, round up to \_\_\_\_\_ inlets. Based on your interior decor, select the color and style wall inlet most suited for your needs as shown on page 11.

Type of Wall Inlet Selected \_\_\_\_\_

4 We strongly recommend including at least one VacuSweep® for use in kitchens, pantries, laundry rooms or other locations that have hard surface flooring. See page 11 to select the VacuSweep right for you.

VacuSweep \_\_\_\_\_ Qty \_\_\_\_\_

5 For determining the amount of tubing and fittings needed: Typical installations require about 16 ft. of tubing for each wall inlet and VacuSweep used. To estimate the amount of tubing required multiply the # of inlets and VacuSweeps.

VacuSweep \_\_\_\_\_ x 16 = \_\_\_\_\_ ft.

Based on the number of wall inlets in your system, select the series kit needed for your style wall inlet as shown on page 11.

Kit \_\_\_\_\_



*Congratulations...  
You have quickly and easily  
selected all the basics for your  
Central Vacuum System!*

# The Ultimate All-in-One Cleaning Solution



## VXKIT600E

An exceptional cleaning companion specifically designed for homes with wall-to-wall carpeting, this premium model features an electric power brush for optimum cleaning power, a deluxe hose with ergonomic handle, plus a deluxe tool set.

Includes:

### VX6000C Power Unit

- 550 Air Watts
- For homes up to 6,000 sq. ft.
- Self-cleaning permanent HEPA membrane filter made with DuPont™ Teflon®

### BN185 Electric Power Brush

### BN235 Deluxe 7 Piece Tool Set

### BN32DV 32' Dual-Voltage Crushproof Hose

## VXKIT300A

The convenience you need to clean your home from top to bottom, from carpets to hard surfaces. This popular model features a powerful air-driven brush, a lightweight crushproof hose plus a standard tool set with the most-used cleaning tools.

Includes:

### VX3000C

- 475 Air Watts
- For homes up to 3,000 sq. ft.
- Self-cleaning high efficiency permanent cloth filter

### BN175 Air-Driven Brush

### BN135 Standard 6 Piece Tool Set

### BN32LV 32' Low-Voltage

### Crushproof Hose

### Brushes



#### BN190 Deluxe Electric Power Brush

The ultimate choice for large carpeted areas and 'high-pile' carpets, this powerful electric brush delivers unsurpassed cleaning performance.

- Deluxe, low-profile styling in 14" width, features dual brush roller for efficient dirt pickup
- Easy-to-release wands – use the convenient toe lever to remove wand assembly without bending
- 4-position height adjustment for all types of carpeting
- Built-in full-width light maximizes cleaning visibility
- Soft non-scuffing wrap-around bumper protects baseboards and fine furnishings
- Overload reset button
- Overall size: 14-1/4" W x 9" D x 3" H
- Includes two chrome-plated steel wands
- Use with current-carrying hose



#### BN185 Electric Brush

The perfect choice for wall to wall carpeting and 'high pile' carpets, this premium electric brush is an exceptionally durable and convenient cleaning tool.

- Convenient edge-to-edge cleaning and toe touch on/off switch
- Button handle release snaps onto the upper neck of a top wand, making it easier than ever to lock and unlock the handle
- Light maximizes cleaning visibility; brush monitoring window helps identify clogs
- Soft non-scuffing wrap-around bumper protects baseboards and fine furnishings
- Metal agitator with replaceable brush strips lets you maintain cleanliness
- Overall size: 13" W x 8" D x 4-1/4" H
- Ratchet telescopic wand "custom fits" the user
- Use with current-carrying hose



#### BN175 Air-Driven Brush

Ideal for homes with some carpet or hard surface floors, this powerful lightweight air-driven brush makes it easy to maintain a beautifully groomed home.

- Chevron brush-roll design efficiently draws dirt into centre of tool where it is drawn away by the power of the central vacuum
- Built-in air relief valve lets you control air pressure for optimum results
- 10-1/2" cleaning path lets you manoeuvre with ease for efficient edge-to-edge cleaning
- The only air-turbine with a cleaning shoe keeps the brush parallel to the floor for optimum cleaning efficiency
- Soft front and back wheels allow turbine to move onto hard floor surfaces without damaging or scuffing
- Overall size: 10-7/8" W x 8-7/8" D x 2-3/4" H

### Tool Sets



#### BN235 Deluxe Tool Set

- 14" wide hard floor brush features swivel neck for easy manoeuvrability around or under furniture; unique open cut of natural bristles won't push dirt in front of tool
- Aluminum ratchet telescopic wand is half the weight and twice the quality of most steel wands, making it easier to use above-the-floor; from a collapsed length of 22" to an extended length of 39"
- Upholstery tool with shoe designed to prevent seal off; brush strips make it easy to remove hair and lint from upholstery
- Deluxe dusting brush is molded in vinyl for a soft touch to protect fine furnishings; gentle, natural bristles easily release ground-in dirt in upholstery
- Versatile 13" crevice tool with notched end and side vents keeps the air moving when you go down along cushions or the corner of stair risers
- Cloth caddy bag keeps tools organized and in easy reach
- Snap-on tool caddy provides fingertip convenience while vacuuming



#### BN135 Standard Tool Set

- 12" wide hard floor brush features swivel neck for easy manoeuvrability around or under furniture; unique cut of natural bristles won't push dirt in front of tool
- Aluminum ratchet telescopic wand is half the weight and twice the quality of most steel wands, making it easier to use above-the-floor; from a collapsed length of 22" to an extended length of 39"
- Natural bristle upholstery tool features directional slide brush that is detachable for aggressive cleaning
- Square faced dusting brush has 90° edge for easy access to corners; natural bristles easily release ground-in dirt in upholstery
- Handy 10" crevice tool with notched end ensures continuous airflow for optimum cleaning
- Keep tools in easy reach by mounting clip-on caddy to cleaning wand

## Hoses



### BN32DV Dual-Voltage Crushproof Hose

- 32' length: 2 feet longer than industry standard with no added weight; adds flexibility and supports room to room use
- 1-3/4" diameter crushproof hose provides superior airflow
- Tear-drop handle design lets the hose drape to the floor, reducing effort; numerous hand positions help reduce strain and increase ease of use; full 360° rotation eliminates wrist strain, kinking hoses and increases durability for a longer hose life
- Handle's cord management feature lets you separate the handle for accessory use (use with BN185)
- Three-position switch gives you complete control of both the vacuum and the power brush where you want it, in your hand
- Built-in air relief valve lets you control hose suction for optimum results
- Deluxe hose hanger for fast and easy storage



### BN32LV Low-Voltage Crushproof Hose

- 32' length: 2 feet longer than standard hoses; conveniently supports room to room use with no added weight
- 1-3/4" diameter crushproof hose provides superior airflow
- Comfort handle with fingertip switch provides ergonomic comfort; full 360° rotation eliminates wrist strain, kinking hoses and increases durability for a longer hose life
- Two-position switch gives you complete control of the vacuum where you want it, in your hand
- Built-in air relief valve lets you control hose suction for optimum results
- Convenient hose hanger with mounting screws keeps the hose off the floor and away from view when not in use



### BN30CC Standard Current-Carrying Hose

- 30' length wire-reinforced vinyl hose for use with optional electric power brush
- No switches
- 1-1/4" diameter
- Rotary control regulates suction
- Comes with wire hose hanger



### BN32 Standard Hose

- 32' length soft vinyl over steel wire interwoven with nylon cord
- 1-1/4" diameter
- Rotary control regulates suction
- Comes with wire hose hanger



### GKIT145 Car and Garage Cleaning Kit

- 50' length crushproof bright orange hose features lightweight design and long length for greater comfort and convenience; bright color also makes it highly visible
- Swivel hose handle features multi-level suction control allowing a full range of motion for more efficient dirt pickup
- "Gulper" extra-wide and extra-long crevice tool with full swivel; extended 15" length for hard to reach areas
- Round dusting brush with strong extra-long bristles has 3 different positions for added flexibility and comfort
- Convertible upholstery tool can be used with or without bristle brush
- 9" universal fabric brush with swivel handle; two lint strips make it easy to remove hair and lint from upholstered seats
- See-thru mesh caddy bag provides easy tool storage and retrieval
- Convenient hose hanger with mounting screws lets you keep the hose off the floor and out of your way when not in use



### VSB4 Padded Universal Hose Cover

- Prevents scratches, dents, chips and scuff marks caused by the central vacuum hose rubbing against interior contents of the home
- Protects banisters, walls, furniture, floors, wall coverings and moldings
- Fits all makes and models of hoses
- Made from durable polyester anti-static material
- Fastener and ties for non-slip fit
- Slides on and off easily to wash and install

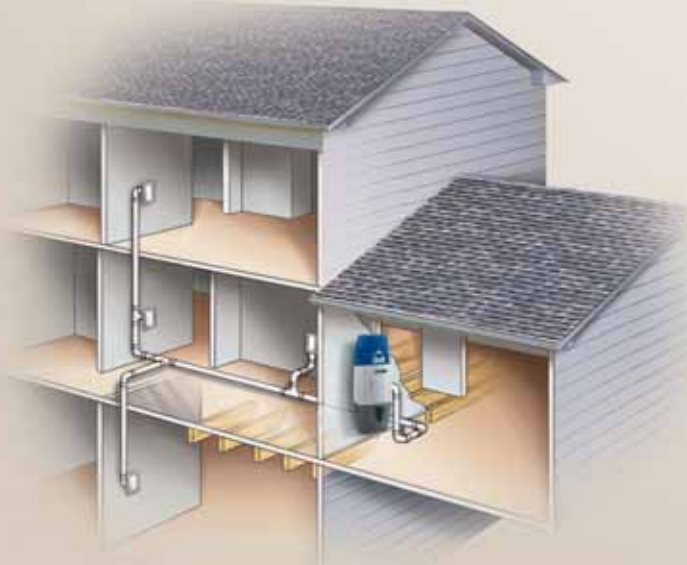
### Installation in 5 Easy Steps

Broan Central Vacuum Systems are designed for easy installation in new or existing homes and come with a detailed installation guide.

In new homes under construction, simply plan the location of the power unit and automatic inlets with your builder or contractor. Tubing and inlets are installed and the electrical hook-up for the power unit is made before drywall, plaster or finished flooring is in place.

Installation is easy in existing homes as well. Cutting through drywall, plaster or flooring can be kept to a minimum and is determined by the number and location of the inlets. Tubing can also be run through cold air returns, closets and stairwells to further simplify the installation process.

The Broan Central Vacuum installs easily in new construction or existing homes.



#### STEP 1

Determine the most convenient location for inlet valves on interior walls.



#### STEP 2

Route PVC tubing, fittings and low-voltage wiring from the inlets to the power unit.



#### STEP 3

Connect PVC tubing and low-voltage wiring to power unit.



#### STEP 4

Install face plates on inlet valves and connect low-voltage wiring.



#### STEP 5

Plug in power unit to electrical outlet and the system is ready to go.



# Installation Components

## VacuSweep® Inlet Valve

- Makes it easy for debris and dirt to be swept and removed from non-carpeted surfaces
- For use in kitchens, mudrooms, workshops, and any sweepable area



### VacuSweep® Trim Plate

- White V601W
- Ivory V601
- Black V601B



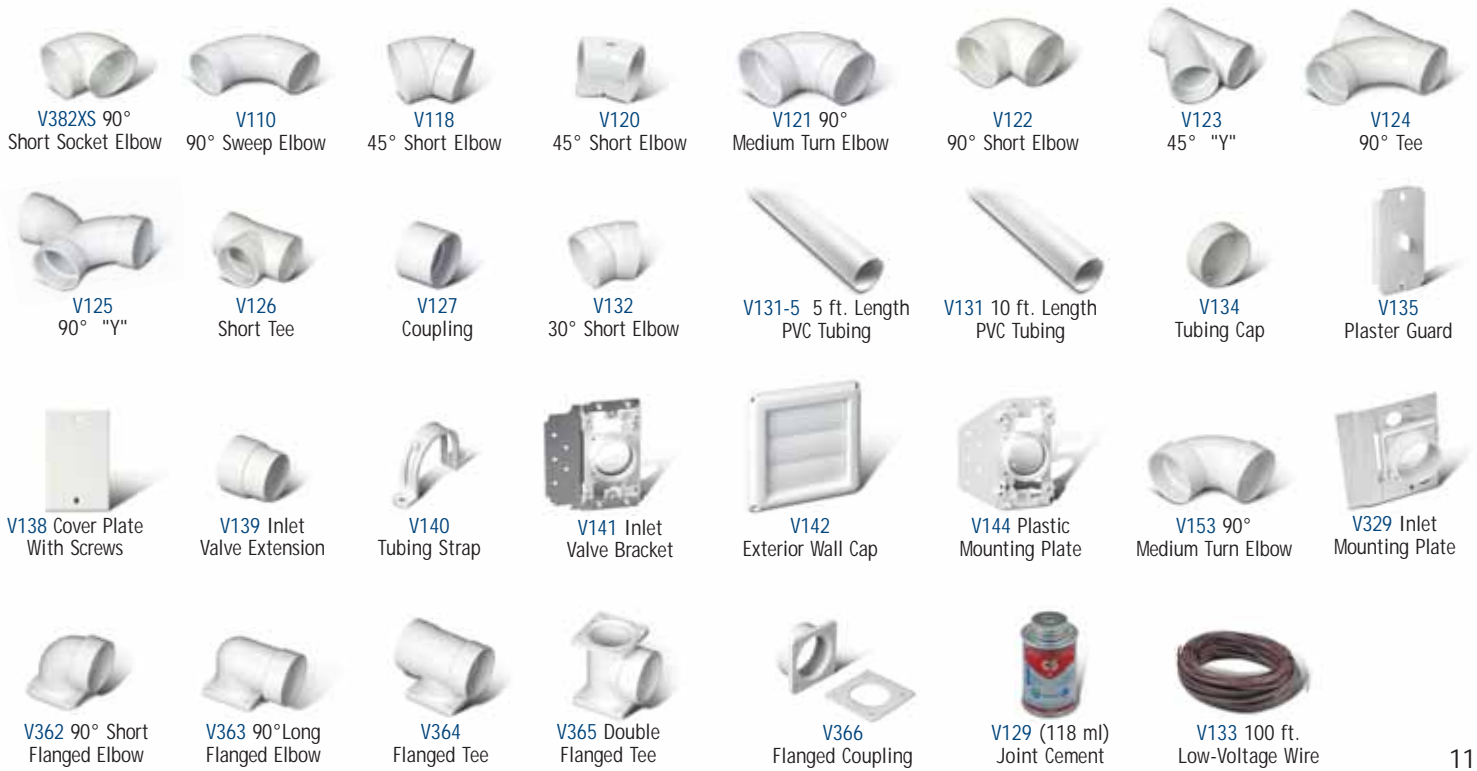
## Wall Inlet



## Inlet Installation Kits


V189 Three-Inlet Kit includes:	V185 Add-on Inlet Kit includes:	V186 Single-Inlet Kit includes:
(3) V120 45° Short Elbow	(1) V120 45° Short Elbow	(1) V111W White Wall Inlet
(6) V121 90° Medium Turn Elbow	(2) V121 90° Medium Turn Elbow	(2) V120 45° Short Elbow
(3) V122 90° Short Elbow	(1) V122 90° Short Elbow	(3) V121 90° Medium Turn Elbow
(2) V124 90° Tee	(1) V124 90° Tee	(1) V122 90° Short Elbow
(6) V127 Coupling	(2) V127 Coupling	(1) V124 90° Tee
(3) V144 Plastic Mounting Plate	(1) V144 Plastic Mounting Plate	(3) V127 Coupling
(1) V129 Joint Cement (118 ml)		(1) V144 Plastic Mounting Plate
(1) V133 100 ft. Low-Voltage Wire		(4) V131-5 PVC Tubing 5 ft. Length
		(1) Joint Cement
		(1) 25 ft. Low-Voltage Wire


## Installation Components




*Quality and Style. Home Ventilation*  *clears up foggy windows*


*and steamy mirrors. Range Hoods*  *complement your decor*

*while ventilating your kitchen. Central Vacuums*  *provide quiet*

*performance with optimum cleaning. Door Chimes*  *announce all*

*your visitors with style. Electric Furnaces*  *distribute heat throughout*

*your home. Intercoms*  *let you communicate with a push of a*

*button. Speakers*  *create a home theatre room. Ironing Centres* 

*simplify pressing with fold-away convenience. Attic Fans*  *control*

*temperatures in non-vented areas. Heaters*  *add warmth in drafty*

*areas. Trash Compactors*  *minimize waste. Thermostats* 

*maintain heat at desired settings. Throughout our Full Line of Products.*

**BROAN-NUTONE**  
CANADA INC.

Customer Service:  
1 888 882-7626 (905) 670-2500  
[www.Broan.ca](http://www.Broan.ca)

Specifications subject to change without notice.  
©2005 Broan-NuTone Canada Inc.

