



900-0255  
Model KN-COPF-I-CA



# Innovative Low Profile

Silhouette CO Alarm – Engineered to Protect. Designed to disappear



- Backlit Digital Display
- Peak Level /Test Button
- Sealed rechargeable battery backup
- CO and Smoke Alarm Indicators

*silhouette*

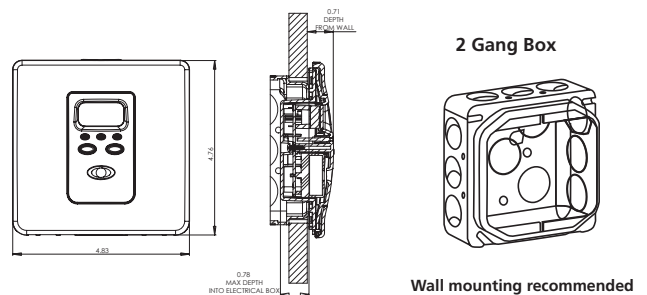


## Install Confidence

- **Innovative Low Profile** – Fits in most standard 2-gang, metal or plastic electrical boxes.
- **120 V AC Direct Wire, Sealed Rechargeable Battery Backup** – Interconnects with up to 24 Kidde devices or 18 initiating alarms. Protects continuously, even during a long-term power outage. Rechargeable battery is turned on automatically when AC power is supplied. Sealed battery does not need to be replaced for the life of the alarm.
- **Backlit Digital Display** – Blue digital LED display alerts you before harmful levels are reached. This unit updates the CO level reading every 15 seconds.
- **Peak Level / Test Button** – Peak level memory button recalls the highest recorded level of CO since the last reset. Test/reset button tests CO alarm circuit operation, and allows you to immediately silence the alarm.
- **CO and Smoke Alarm Indicators** – If this unit is interconnected with other Kidde CO alarms, and has detected CO, the amber LED (Initiating Alarm) of the unit will light for the duration of the alarm. The other interconnected CO alarms will also alarm to warn you that CO was detected. When an interconnected Kidde smoke alarm detects smoke, the Kidde CO alarm will sound a smoke/fire alarm pattern.
- **End of Life Warning** – Seven (7) years after unit is first powered, this alarm will “beep” every 30 seconds and display “End” to indicate that it is time to replace the alarm

## Technical Specifications

P/N:	900-0255
UPC:	0-47871-07701-4
Power Source:	120 V AC (60 Hz, 60 mA max per alarm), Sealed Rechargeable, Lithium-ion Battery Back-up
Sensor:	Electrochemical
Audio Alarm:	85dB at 10ft
Temperature Range:	4.4°C (40°F) to 37.8°C (100°F)
Humidity Range:	10 to 95% relative humidity (RH)
Unit Size:	12.27 cm x 12.09 cm x 3.78 cm
Unit Weight:	0.28 kg
Interconnects:	Up to 24 Kidde devices / 18 initiating
Wiring:	Quick connect plug with 8” pigtails
Warranty:	7 year limited



## Ordering Information

Ordering Number	UPC	I2of5	Pack Quantity	Dimensions (w x d x h centimeters)	Weight	Case / Skid	Layers / Skid
N/A	0-47871-07701-4	N/A	Individual*	13 x 13 x 4.5	0.30 kg	N/A	N/A
900-0255	0-47871-07701-4	100-47871-07701-1	6 units	14 x 13.5 x 31	1.92 kg	108	6

\*Not for sale by individual unit