

# Options and Accessories Installation Guide



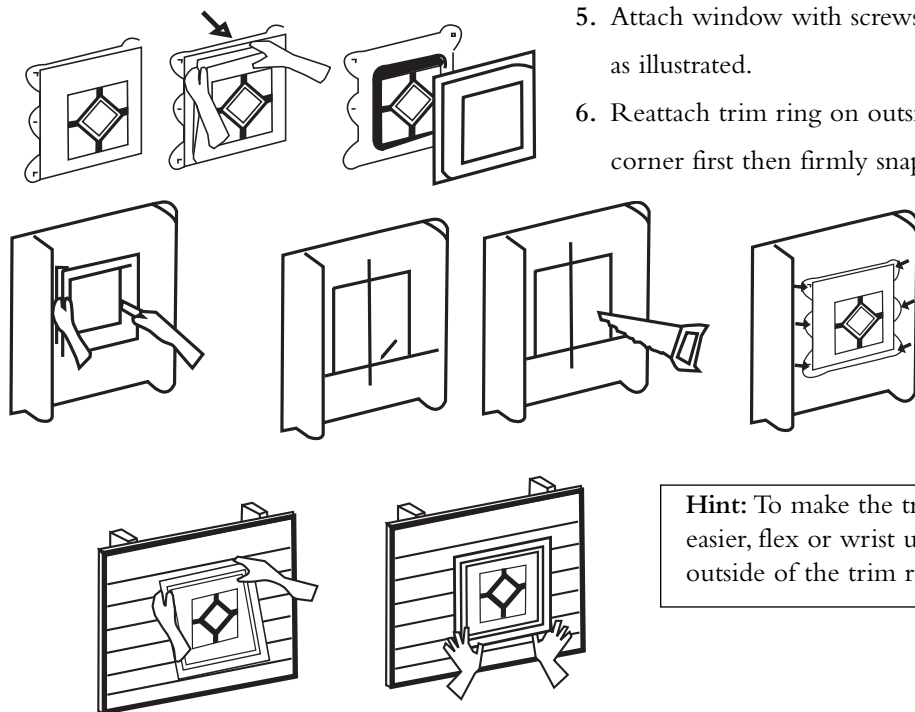
## Shelf

1. Using a level or measuring tape, mark a level line at desired height for shelf.
2. Place pre-assembled shelf (12" x 48") on level line and screw through 2 x 3 shelf frame into studs.
3. Place 45° shelf brace under shelf at each end.
4. Hold shelf level and screw through brace into shelf then through brace into studs.



## Windows

1. Remove the trim ring by pulling one corner first, then pull remaining corners of window.
2. Use inside of trim ring as template to make a hole for the gable window. Be generous with the cut. (Between studs, under no circumstances cut studs).
3. Using a level, mark the inside wall with horizontal and vertical lines to assure alignment. Cut out hole.
4. Push window through hole from inside the shed and align window with the level line moulded on the flange, center with the level wall markings.
5. Attach window with screws through the moulded nail holes as illustrated.
6. Reattach trim ring on outside of shed by pushing one corner first then firmly snapping on remaining corners.



**Hint:** To make the trim rings release and snap on easier, flex or wrist upwards while grasping the outside of the trim ring as illustrated in step one.



## Shutters

1. Place shutters level with bottom and sides of windows.
2. Screw 4 – 2 1/2" x 1/8" screws through shutters, make sure to hit 1 x 3 back buckle (preferably into studs as well).



## Flower Box

1. Mark a level line 7" below window.
2. Mark center of window on this line.
3. Mark center of box on the bottom.
4. Place box on line and centre the marks.
5. Screw through back of box into siding (try to line up with studs).



## Ramp

1. Mark a level line 2" below door.
2. Screw through back of ramp into rim joist making sure ramp is centred under door.
3. Put last two deck boards on and screw down.

the Backyard  
**ORGANIZER**<sup>®</sup>  
by *Suntrellis*

*Store it in Style*